

North Albion Collegiate Institute

North Albion Collegiate Institute



9-12

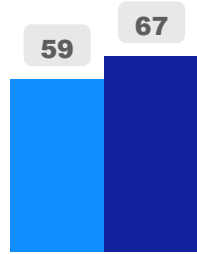
Secondary

Ward 1

Harpreet Gill

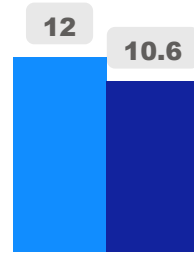
Building Age

● Building Age ● Avg Building Age By Panel



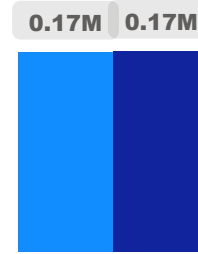
Site Size

● Site Size (Ac) ● Avg Site Size By Panel

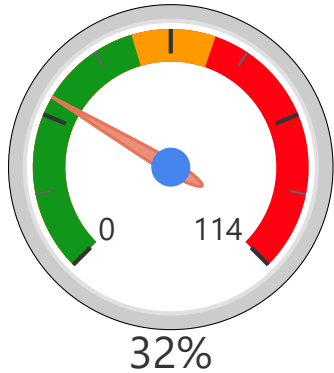


Facility Size

● Facility Size (Sf) ● Avg Facility Size By Panel



Current FCI

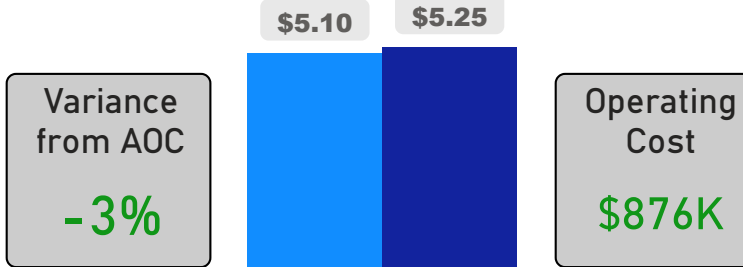


System FCI



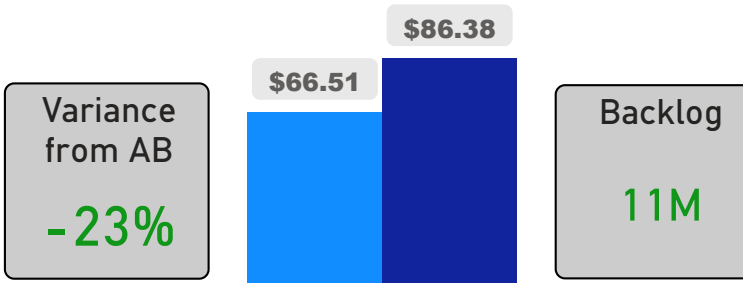
Operating Cost Per Square Foot

● Operating Cost/Sf ● Average Operating Cost (AOC)/Sf



Backlog Per Square Foot

● Backlog/Sf ● Average Backlog (AB)/Sf



1,095

School Capacity

820

Enrollment

75%

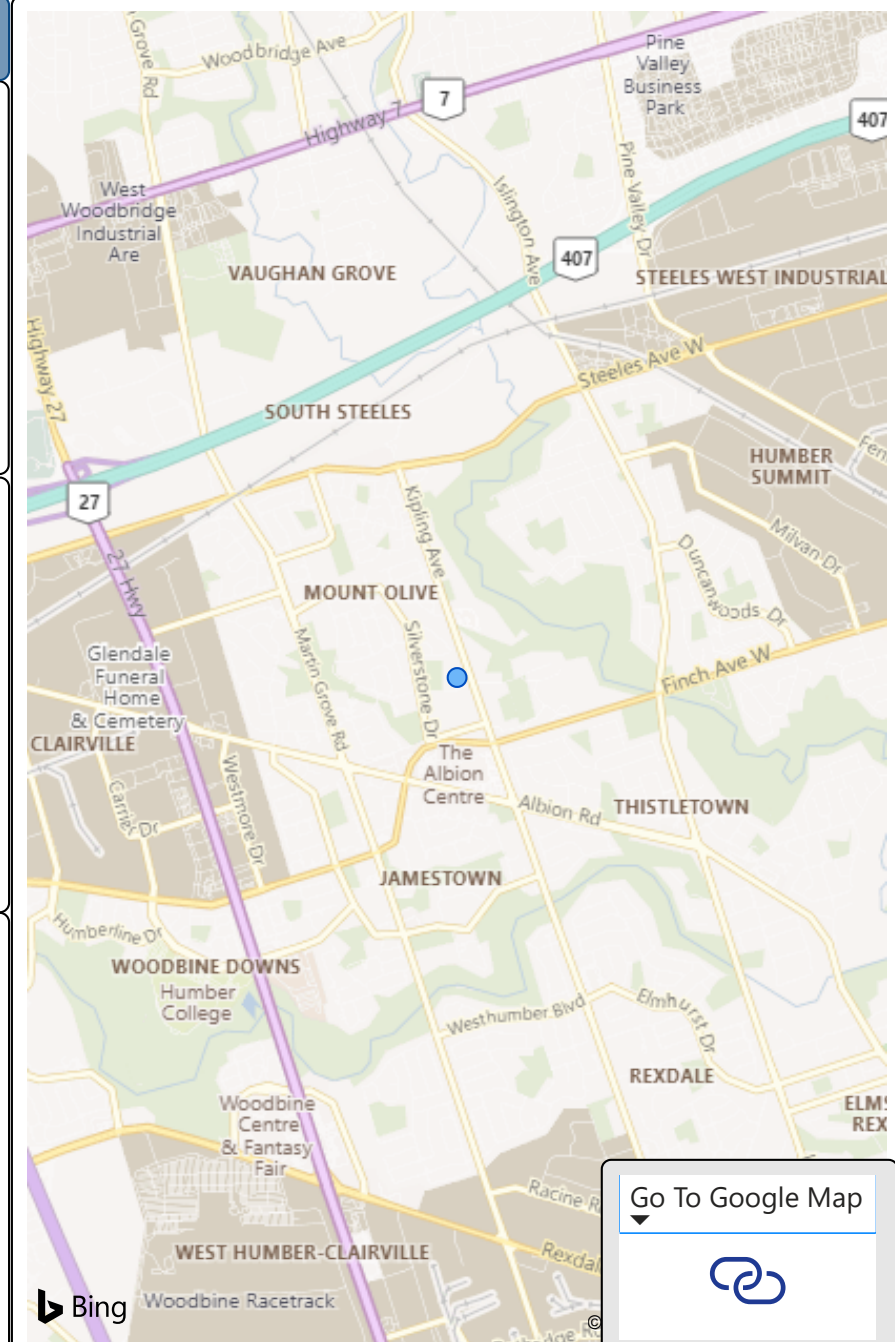
2020 Utilization Rate

695

2025 Proj Enrollment

63%

2025 Utilization Rate



Go To Google Map

