

Newtonbrook Secondary School

Newtonbrook Secondary School



9-12

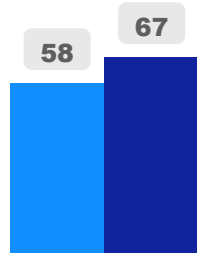
Secondary

Ward 12

Alexander Brown

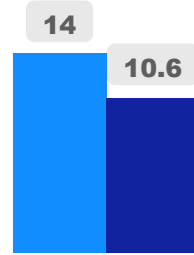
Building Age

● Building Age ● Avg Building Age By Panel



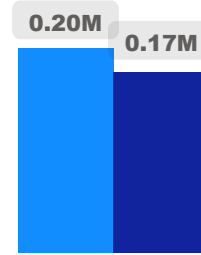
Site Size

● Site Size (Ac) ● Avg Site Size By Panel

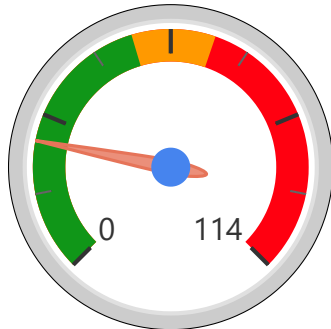


Facility Size

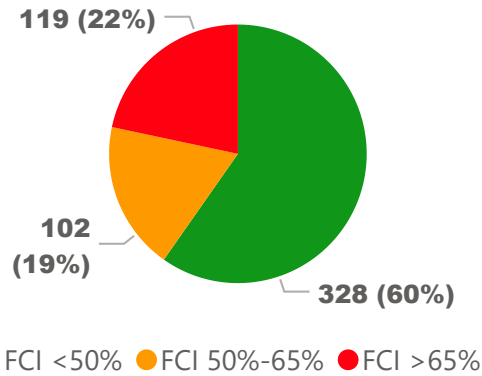
● Facility Size (Sf) ● Avg Facility Size By Panel



Current FCI

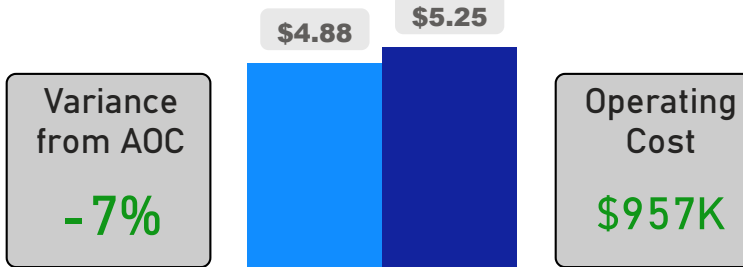


System FCI



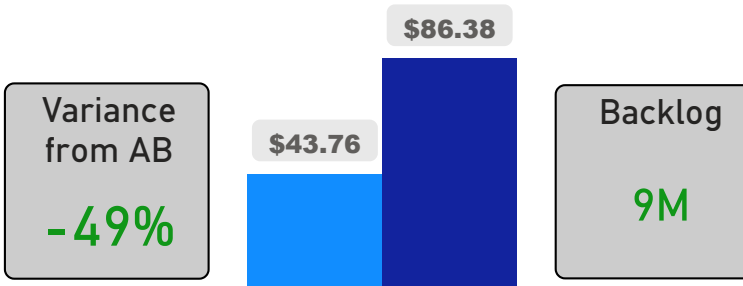
Operating Cost Per Square Foot

● Operating Cost/Sf ● Average Operating Cost (AOC)/Sf



Backlog Per Square Foot

● Backlog/Sf ● Average Backlog (AB)/Sf



1,293

School Capacity

766

Enrollment

59%

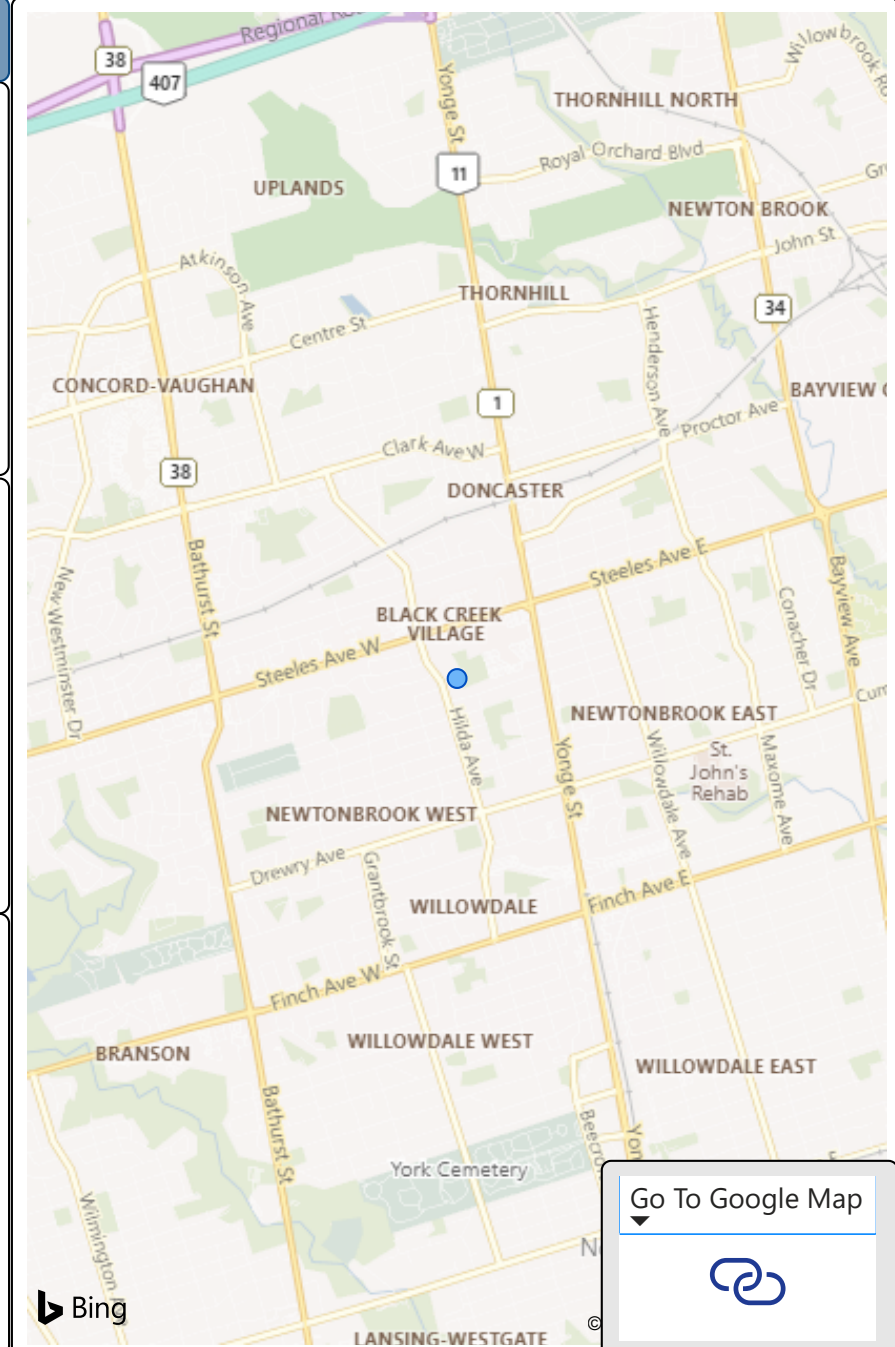
2020 Utilization Rate

1,037

2025 Proj Enrollment

80%

2025 Utilization Rate



Go To Google Map



Bing