

Crestview Public School

Crestview Public School



JK-5

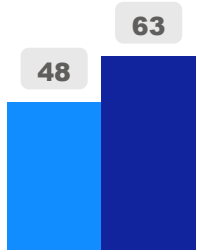
Elementary

Ward 13

James Li

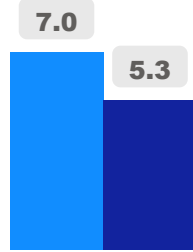
Building Age

● Building Age ● Avg Building Age By Panel



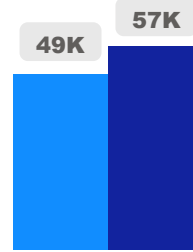
Site Size

● Site Size (Ac) ● Avg Site Size By Panel

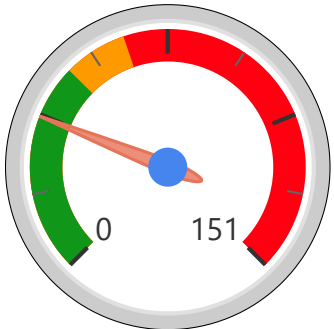


Facility Size

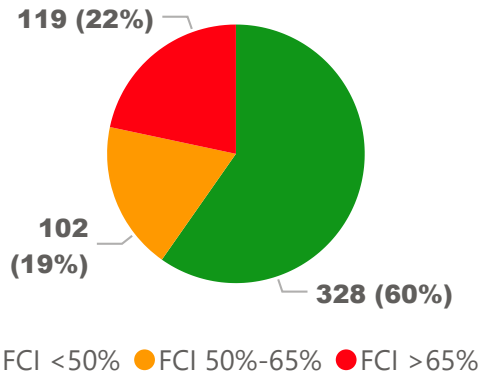
● Facility Size (Sf) ● Avg Facility Size By Panel



Current FCI

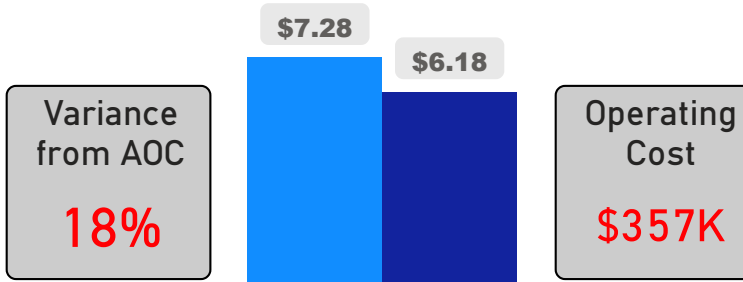


System FCI



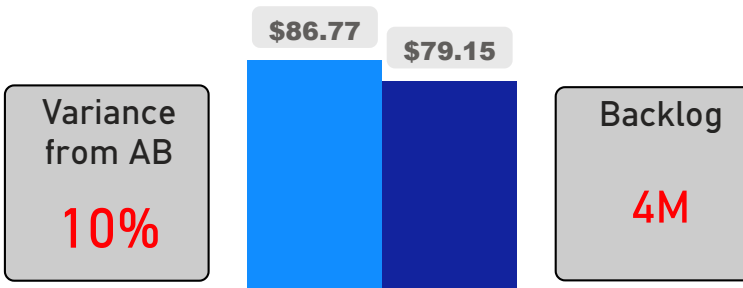
Operating Cost Per Square Foot

● Operating Cost/Sf ● Average Operating Cost (AOC)/Sf



Backlog Per Square Foot

● Backlog/Sf ● Average Backlog (AB)/Sf



536

School Capacity

434

Enrollment

81%

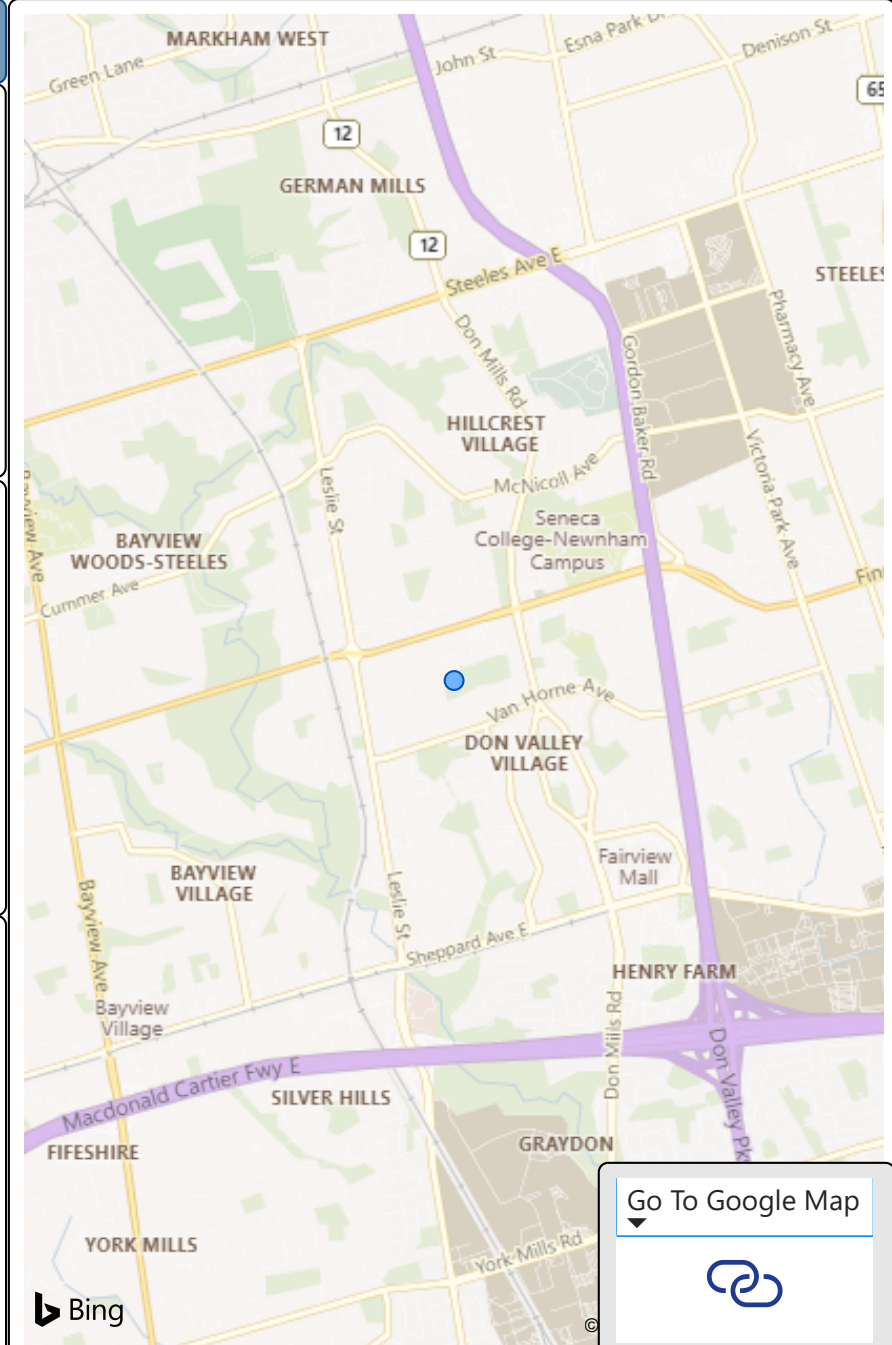
2020 Utilization Rate

619

2025 Proj Enrollment

115%

2025 Utilization Rate



[Go To Google Map](#)



Bing