

# Earl Grey Senior Public School

Earl Grey Senior Public School



7-8

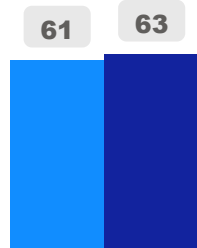
Elementary

Ward 15

Jennifer Story

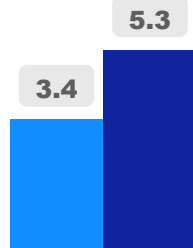
## Building Age

● Building Age ● Avg Building Age By Panel



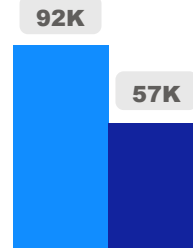
## Site Size

● Site Size (Ac) ● Avg Site Size By Panel

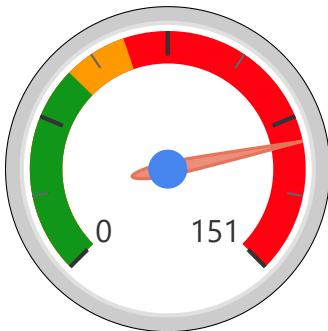


## Facility Size

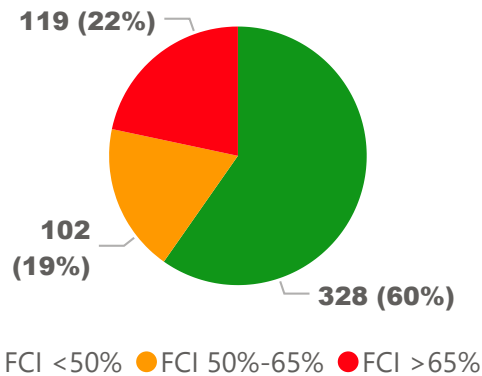
● Facility Size (Sf) ● Avg Facility Size By Panel



## Current FCI

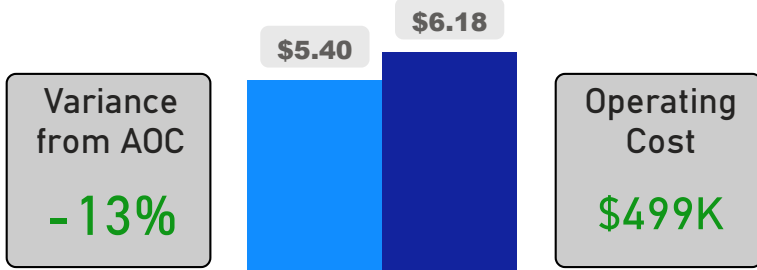


## System FCI



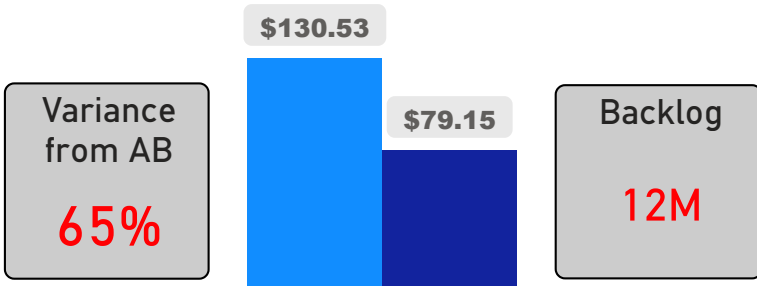
## Operating Cost Per Square Foot

● Operating Cost/Sf ● Average Operating Cost (AOC)/Sf



## Backlog Per Square Foot

● Backlog/Sf ● Average Backlog (AB)/Sf



499

School Capacity

422

Enrollment

520

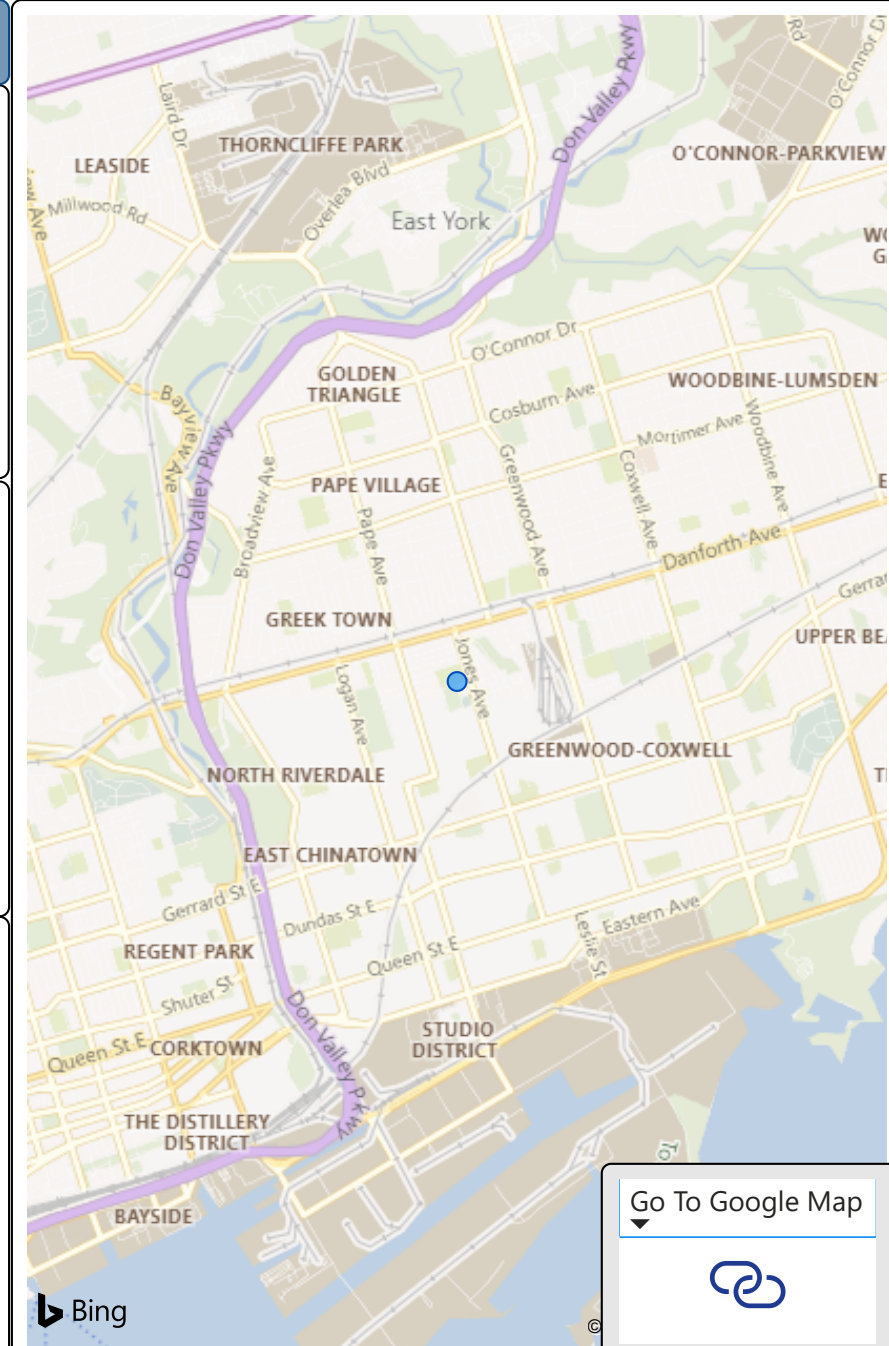
2025 Proj Enrollment

85%

2020 Utilization Rate

104%

2025 Utilization Rate



[Go To Google Map](#)



Bing