

# Greenwood Secondary School

Greenwood Secondary School



9-12

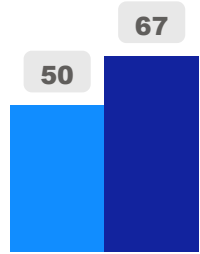
Secondary

Ward 15

Jennifer Story

## Building Age

● Building Age ● Avg Building Age By Panel



## Site Size

● Site Size (Ac) ● Avg Site Size By Panel

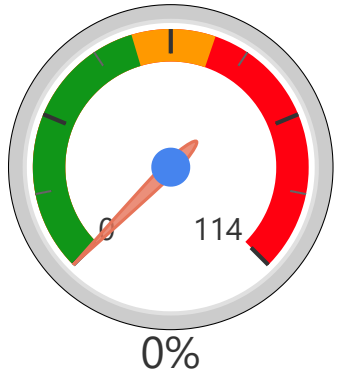


## Facility Size

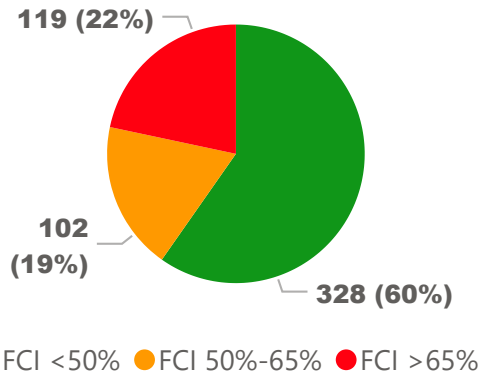
● Facility Size (Sf) ● Avg Facility Size By Panel



## Current FCI

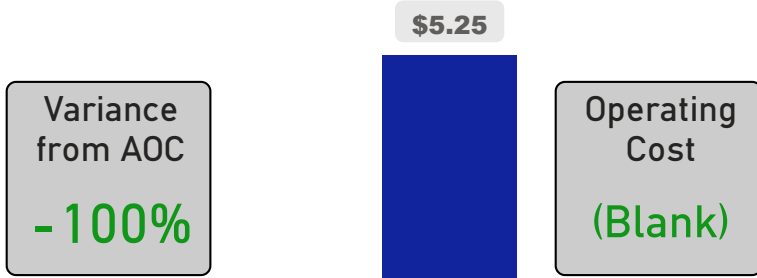


## System FCI



## Operating Cost Per Square Foot

● Operating Cost/Sf ● Average Operating Cost (AOC)/Sf



## Backlog Per Square Foot

● Backlog/Sf ● Average Backlog (AB)/Sf



420

School Capacity

167

Enrollment

40%

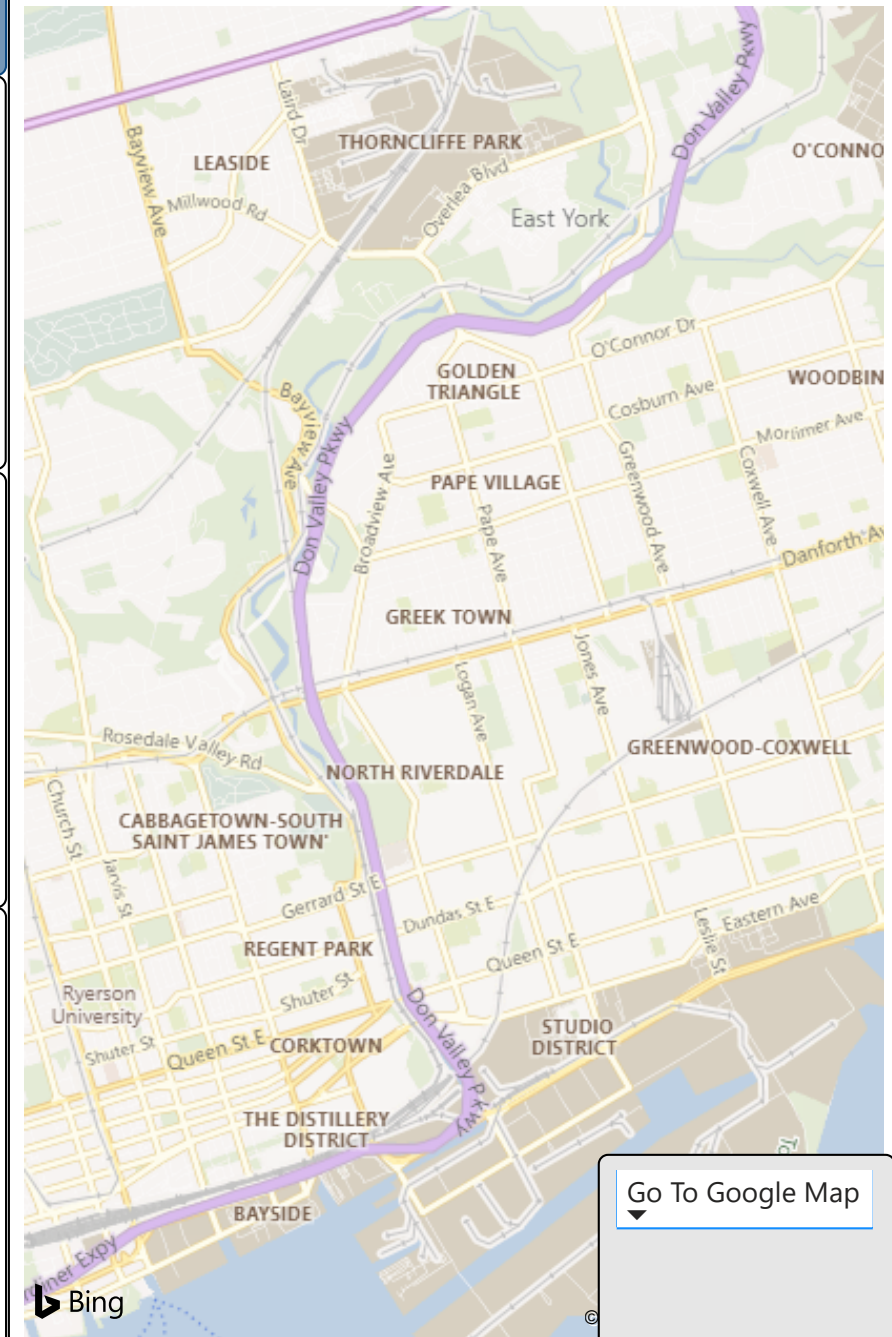
2020 Utilization Rate

214

2025 Proj Enrollment

51%

2025 Utilization Rate



[Go To Google Map](#)

Bing