

# Wilkinson Junior Public School

Wilkinson Junior Public School



JK-6

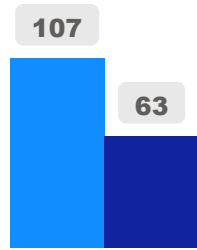
Elementary

Ward 15

Jennifer Story

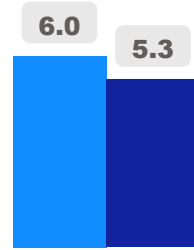
## Building Age

● Building Age ● Avg Building Age By Panel



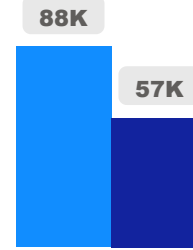
## Site Size

● Site Size (Ac) ● Avg Site Size By Panel

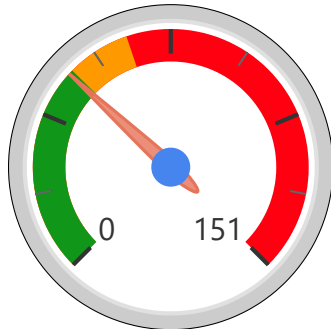


## Facility Size

● Facility Size (Sf) ● Avg Facility Size By Panel



## Current FCI

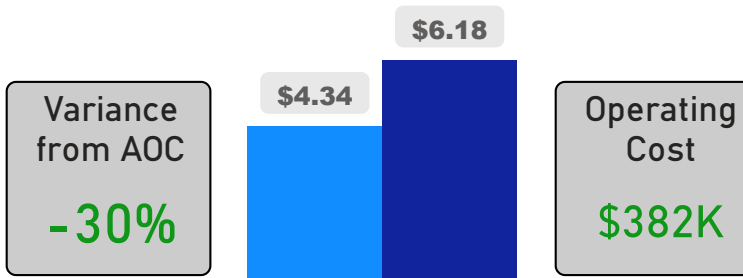


## System FCI



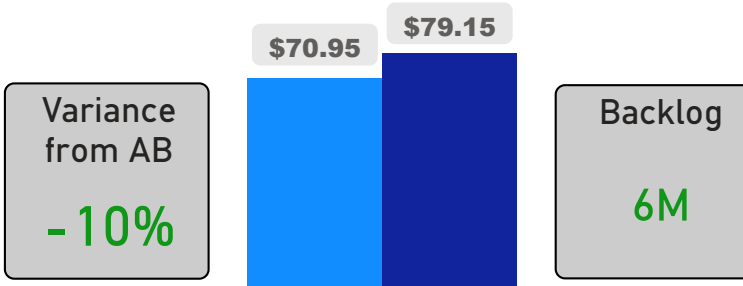
## Operating Cost Per Square Foot

● Operating Cost/Sf ● Average Operating Cost (AOC)/Sf



## Backlog Per Square Foot

● Backlog/Sf ● Average Backlog (AB)/Sf



615

School Capacity

480

Enrollment

78%

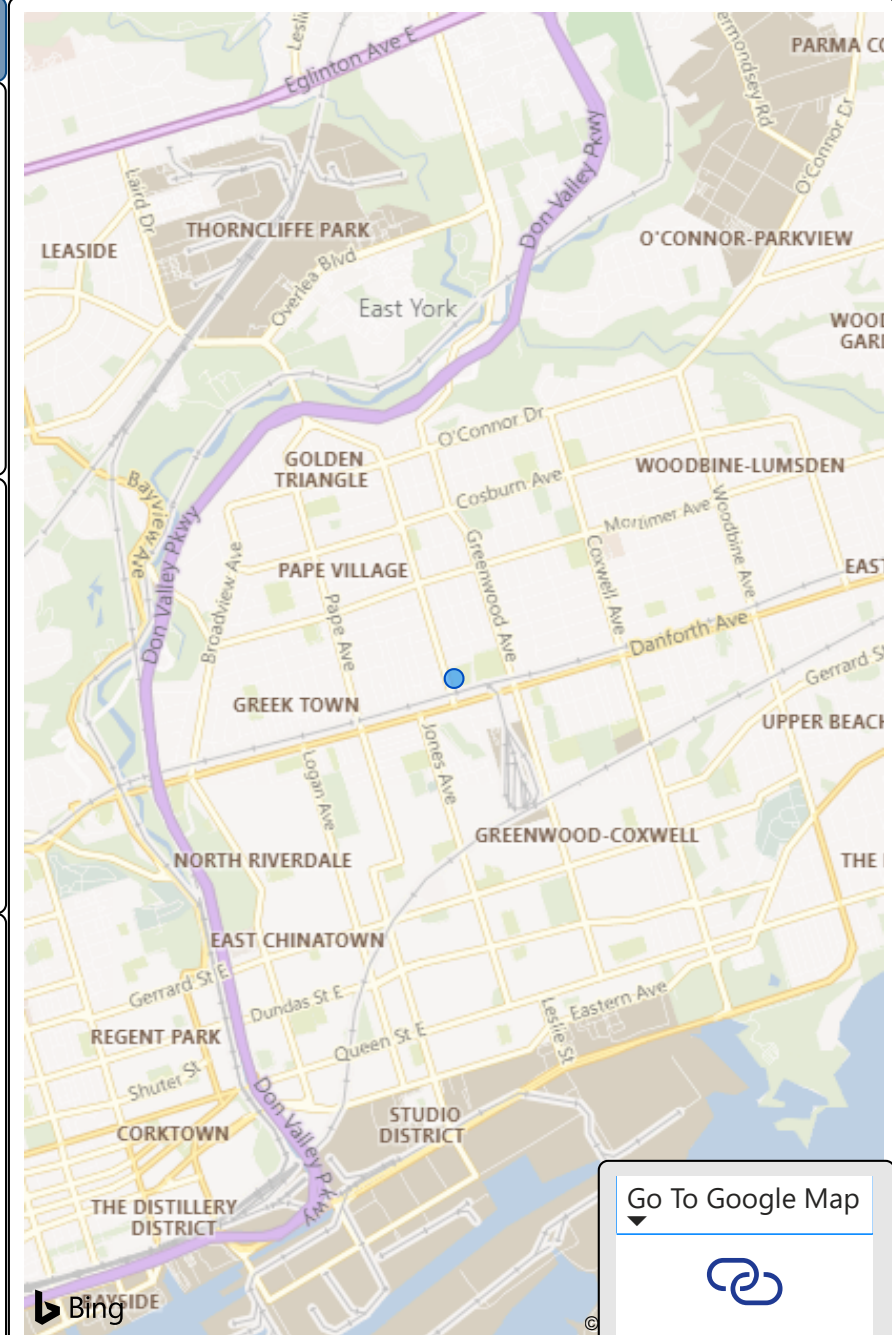
2020 Utilization Rate

491

2025 Proj Enrollment

80%

2025 Utilization Rate



[Go To Google Map](#)

