

Beaches Alternative Junior School

Beaches Alternative Junior School



JK-6

Elementary

Ward 16

Michelle Aarts

Building Age

● Building Age ● Avg Building Age By Panel



Site Size

● Site Size (Ac) ● Avg Site Size By Panel

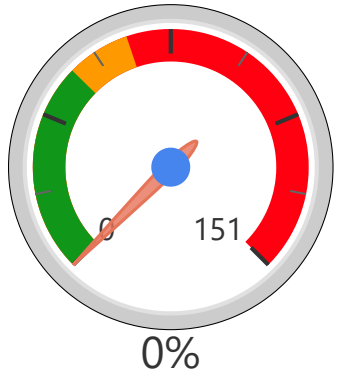


Facility Size

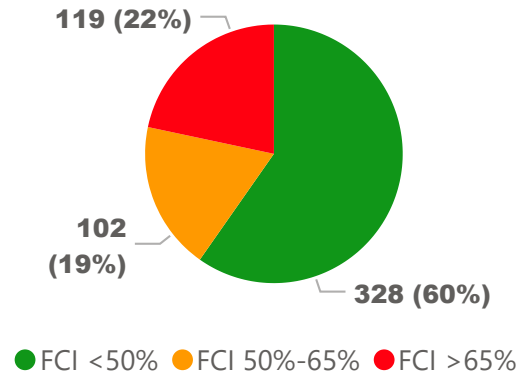
● Facility Size (Sf) ● Avg Facility Size By Panel



Current FCI

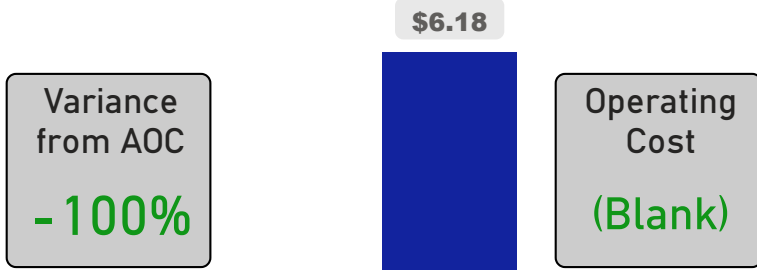


System FCI



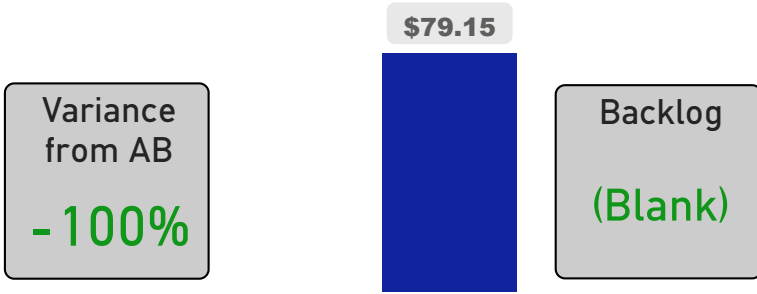
Operating Cost Per Square Foot

● Operating Cost/Sf ● Average Operating Cost (AOC)/Sf



Backlog Per Square Foot

● Backlog/Sf ● Average Backlog (AB)/Sf



92

School Capacity

77

Enrollment

84%

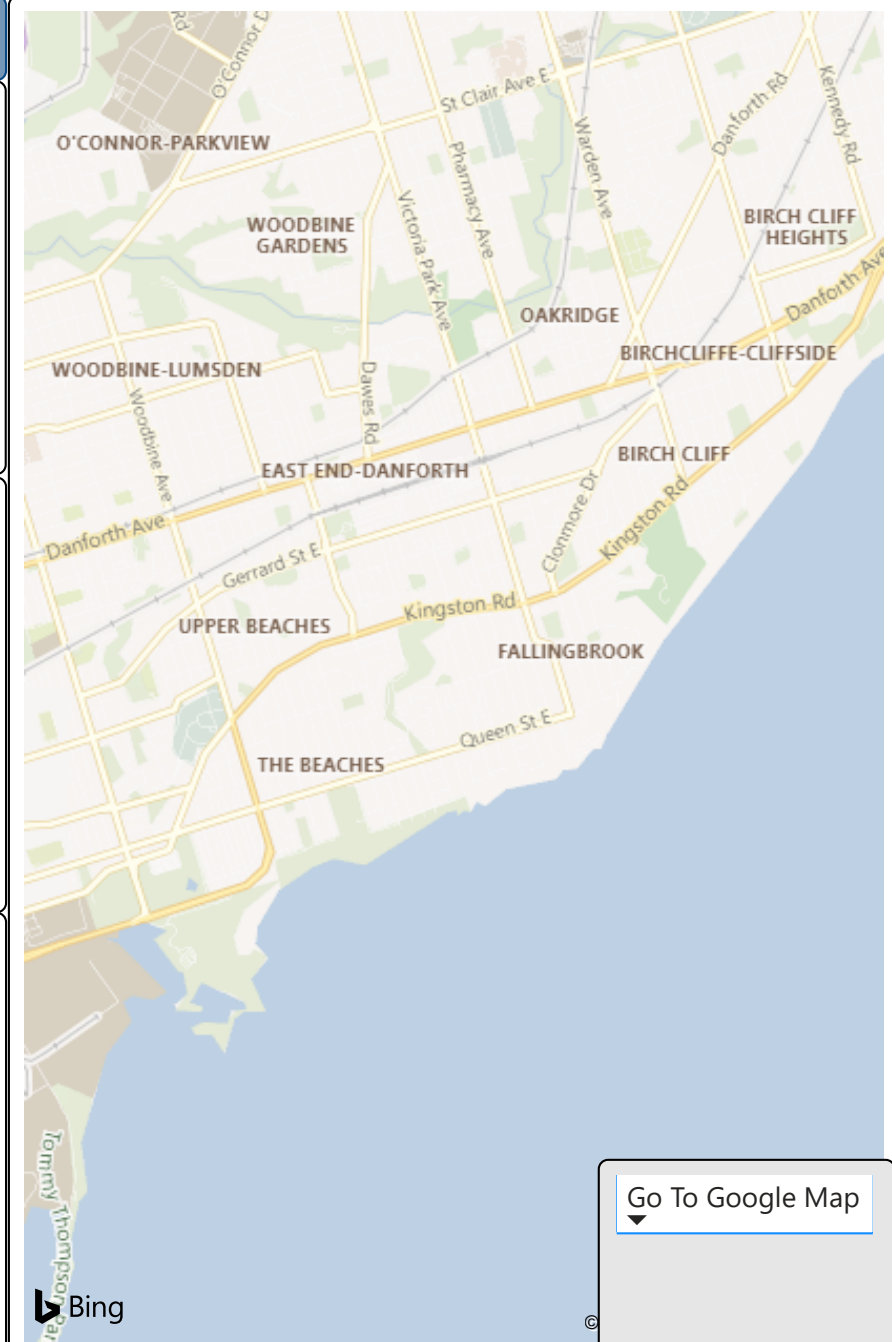
2020 Utilization Rate

87

2025 Proj Enrollment

95%

2025 Utilization Rate



[Go To Google Map](#)

Bing