

# East York Alternative Secondary School

East York Alternative Secondary Sch... ▾



10-12

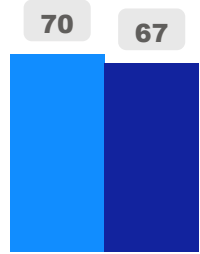
Secondary

Ward 16

Michelle Aarts

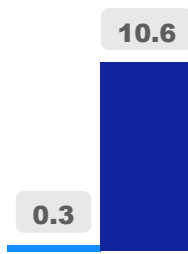
## Building Age

● Building Age ● Avg Building Age By Panel



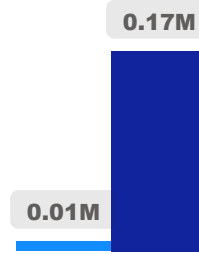
## Site Size

● Site Size (Ac) ● Avg Site Size By Panel

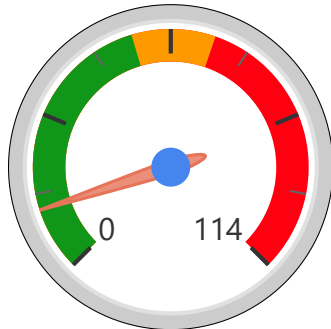


## Facility Size

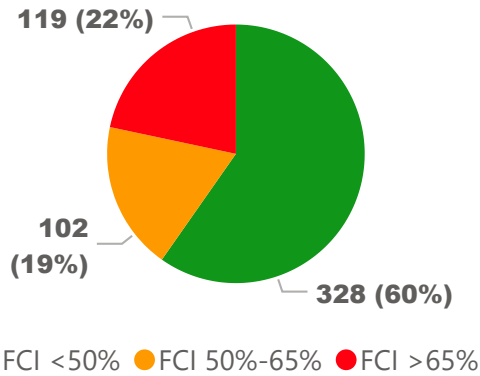
● Facility Size (Sf) ● Avg Facility Size By Panel



## Current FCI

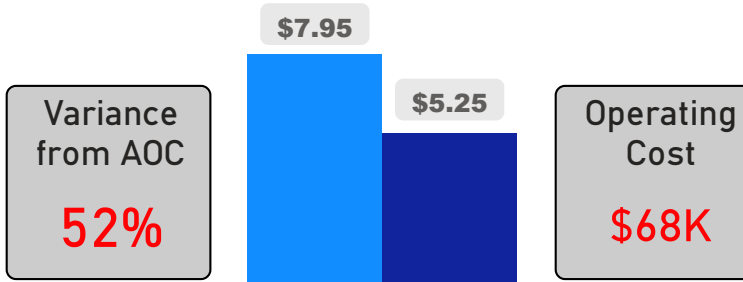


## System FCI



## Operating Cost Per Square Foot

● Operating Cost/Sf ● Average Operating Cost (AOC)/Sf



## Backlog Per Square Foot

● Backlog/Sf ● Average Backlog (AB)/Sf



84

School Capacity

129

Enrollment

154%

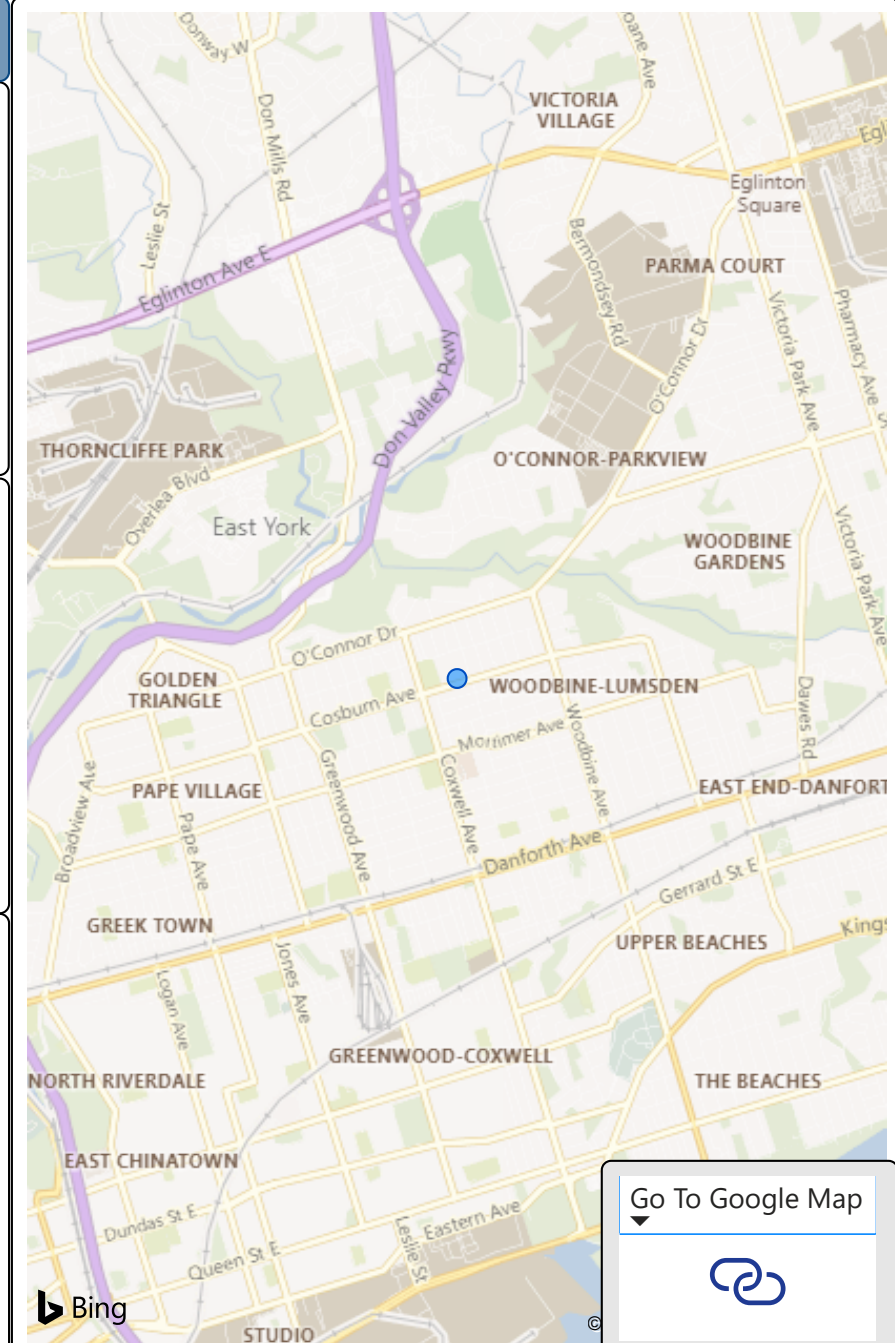
2020 Utilization Rate

100

2025 Proj Enrollment

119%

2025 Utilization Rate



Go To Google Map



Bing