

Norman Cook Junior Public School

Norman Cook Junior Public School



JK-6

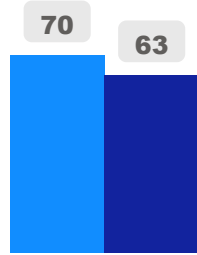
Elementary

Ward 18

Parthi Kandavel

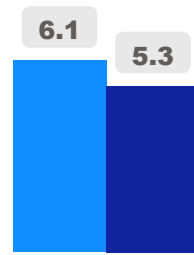
Building Age

● Building Age ● Avg Building Age By Panel



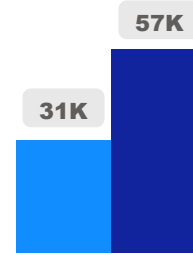
Site Size

● Site Size (Ac) ● Avg Site Size By Panel

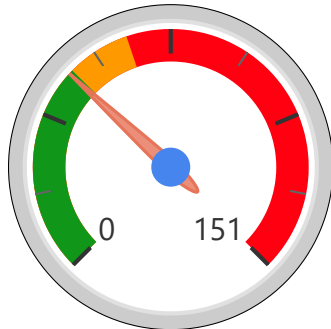


Facility Size

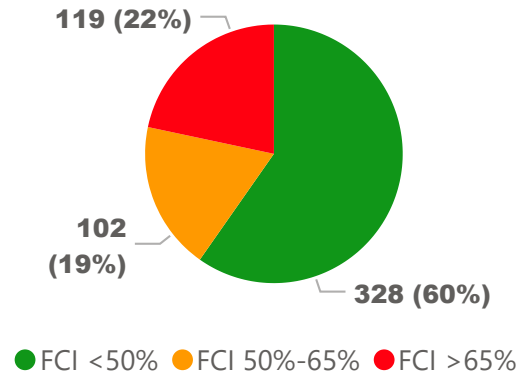
● Facility Size (Sf) ● Avg Facility Size By Panel



Current FCI

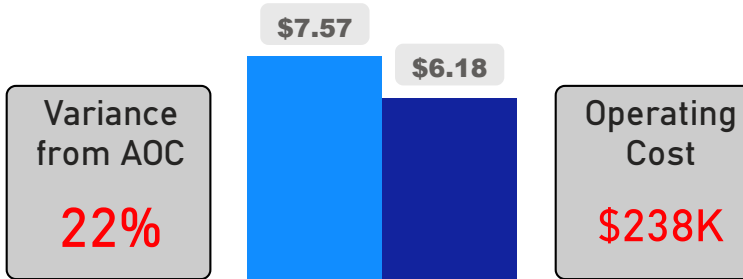


System FCI



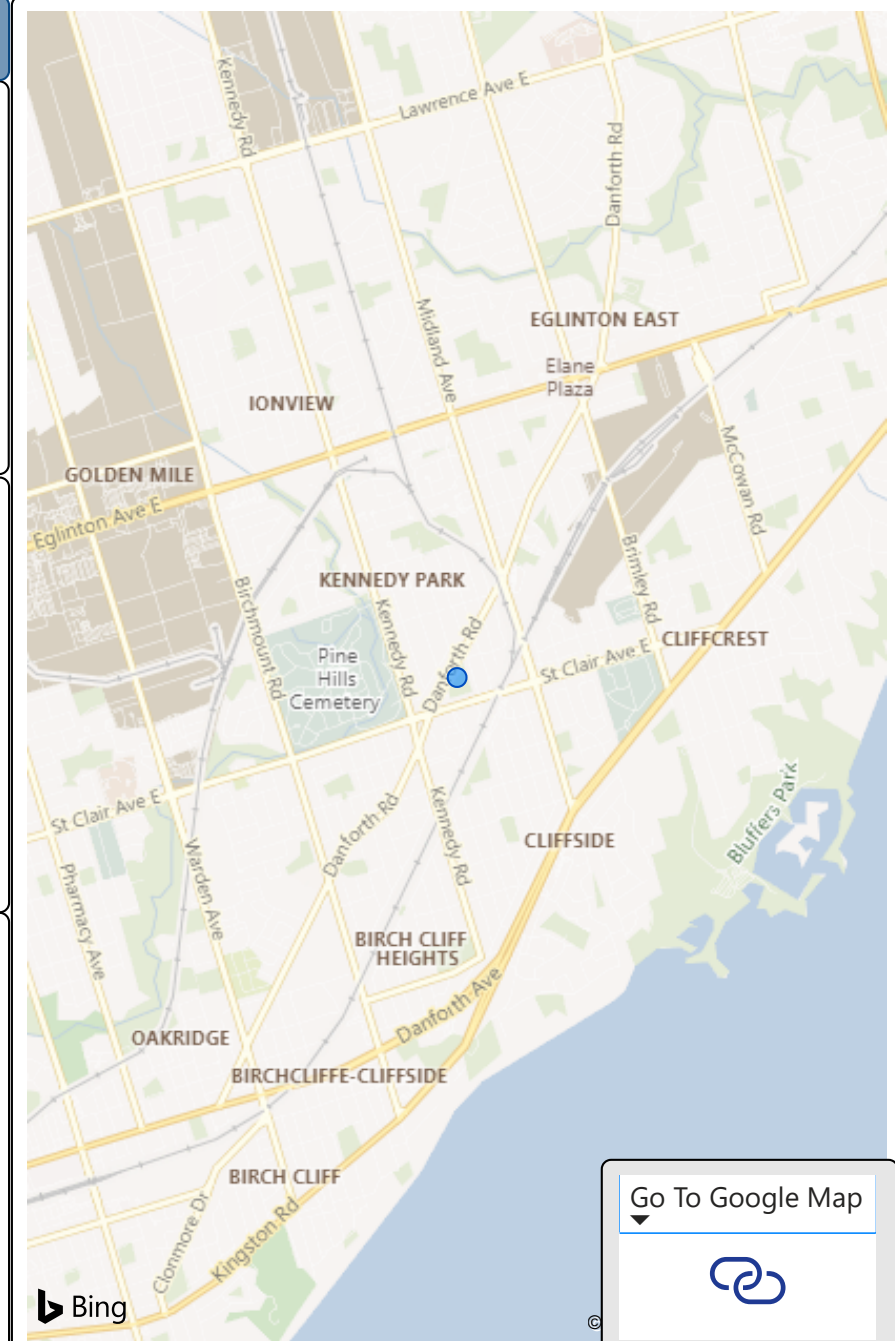
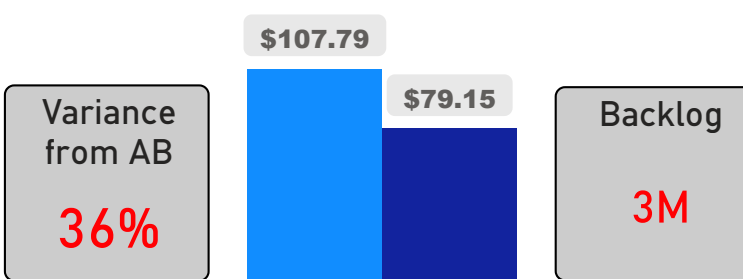
Operating Cost Per Square Foot

● Operating Cost/Sf ● Average Operating Cost (AOC)/Sf



Backlog Per Square Foot

● Backlog/Sf ● Average Backlog (AB)/Sf



[Go To Google Map](#)



217
School Capacity

159
Enrollment

73%
2020 Utilization Rate

180
2025 Proj Enrollment

83%
2025 Utilization Rate

