

# Walter Perry Junior Public School

Walter Perry Junior Public School



JK-6

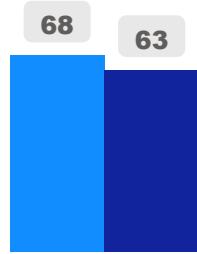
Elementary

Ward 18

Parthi Kandavel

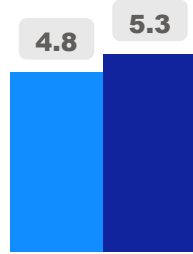
## Building Age

● Building Age ● Avg Building Age By Panel



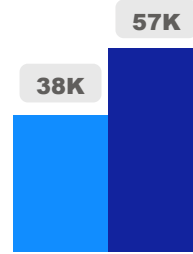
## Site Size

● Site Size (Ac) ● Avg Site Size By Panel

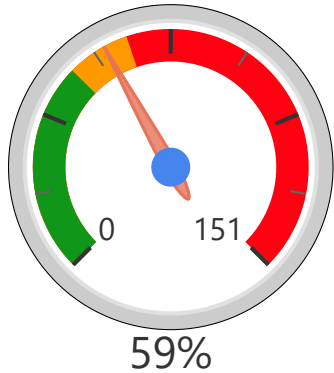


## Facility Size

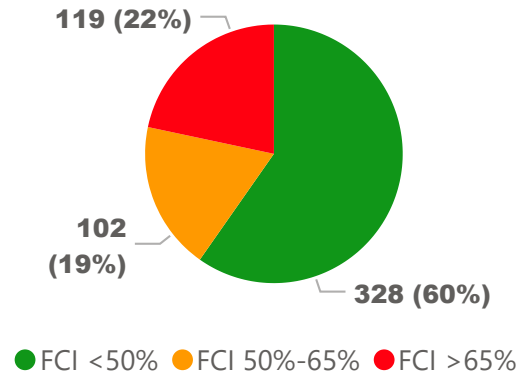
● Facility Size (Sf) ● Avg Facility Size By Panel



## Current FCI

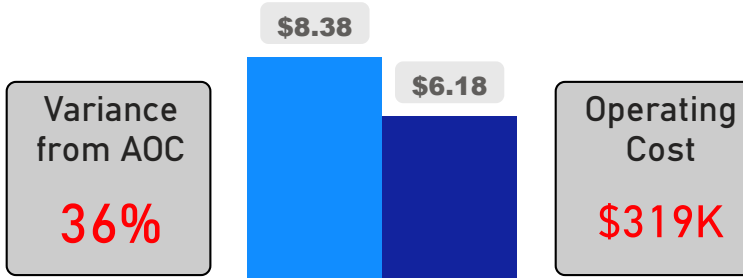


## System FCI



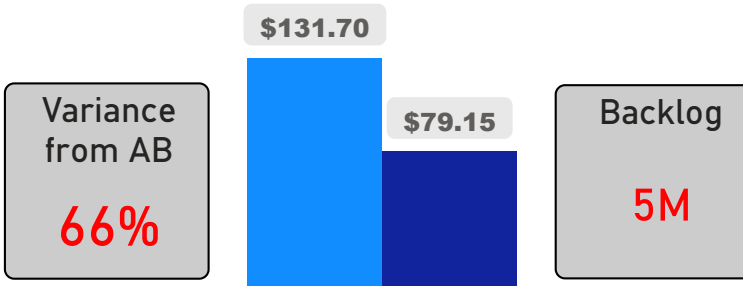
## Operating Cost Per Square Foot

● Operating Cost/Sf ● Average Operating Cost (AOC)/Sf



## Backlog Per Square Foot

● Backlog/Sf ● Average Backlog (AB)/Sf



392

School Capacity

323

Enrollment

82%

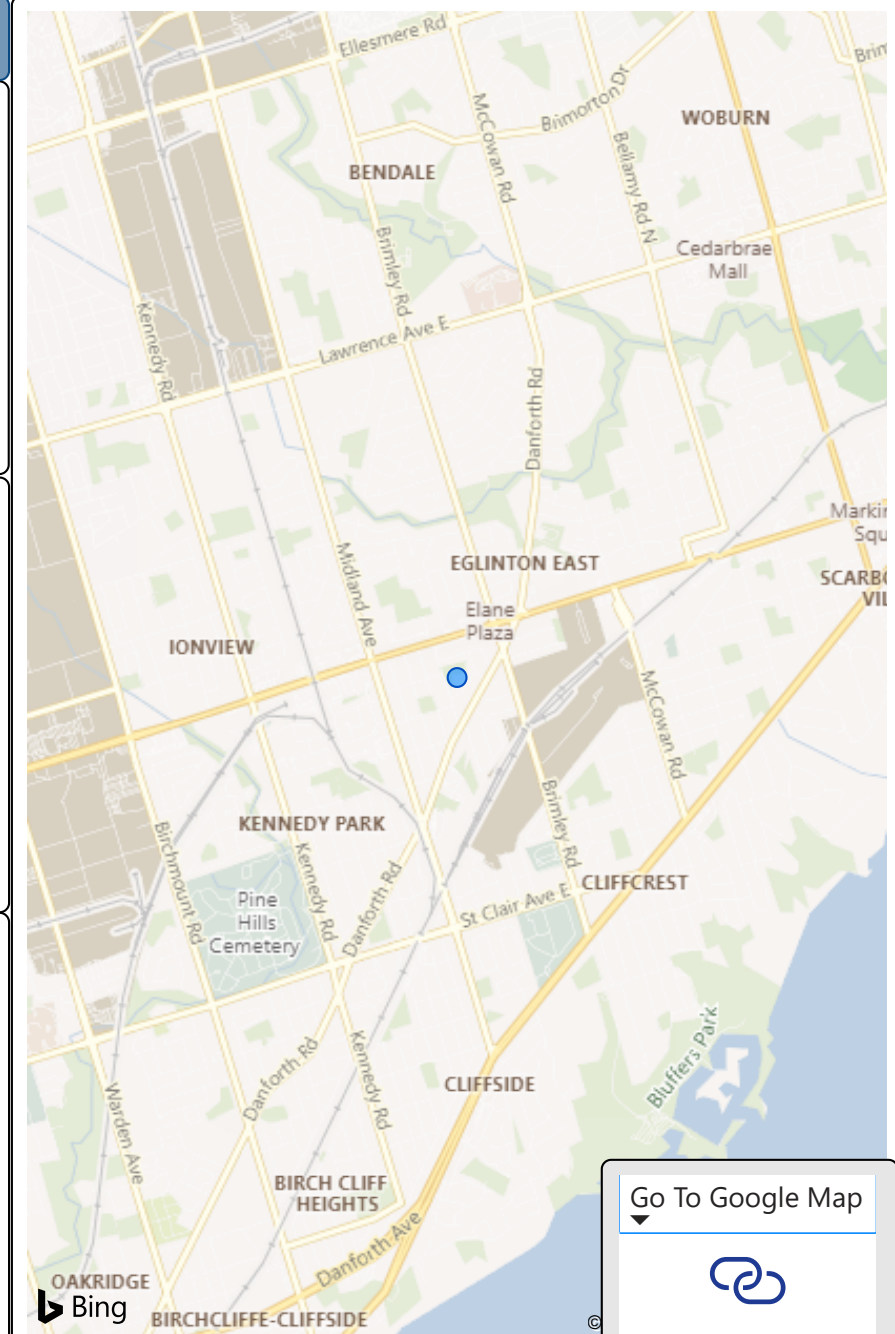
2020 Utilization Rate

335

2025 Proj Enrollment

85%

2025 Utilization Rate



[Go To Google Map](#)

