

Native Learning Centre East

Native Learning Centre East



9-12

Secondary

Ward 19

Zakir Patel

Building Age

● Building Age ● Avg Building Age By Panel



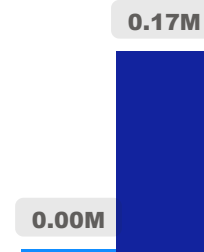
Site Size

● Site Size (Ac) ● Avg Site Size By Panel

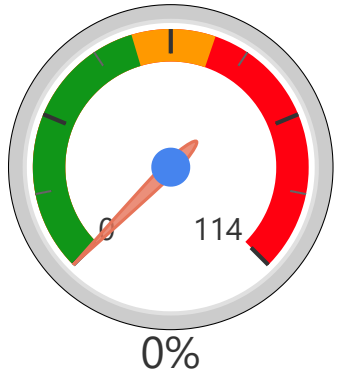


Facility Size

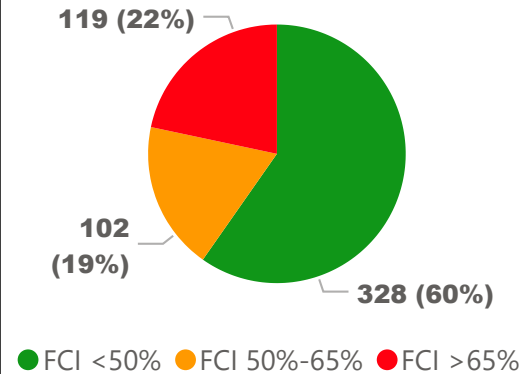
● Facility Size (Sf) ● Avg Facility Size By Panel



Current FCI



System FCI



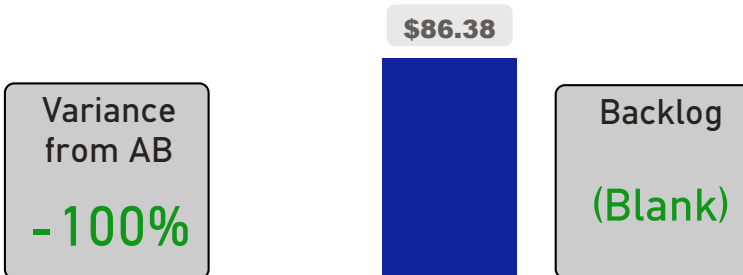
Operating Cost Per Square Foot

● Operating Cost/Sf ● Average Operating Cost (AOC)/Sf



Backlog Per Square Foot

● Backlog/Sf ● Average Backlog (AB)/Sf



42

School Capacity

14

Enrollment

33%

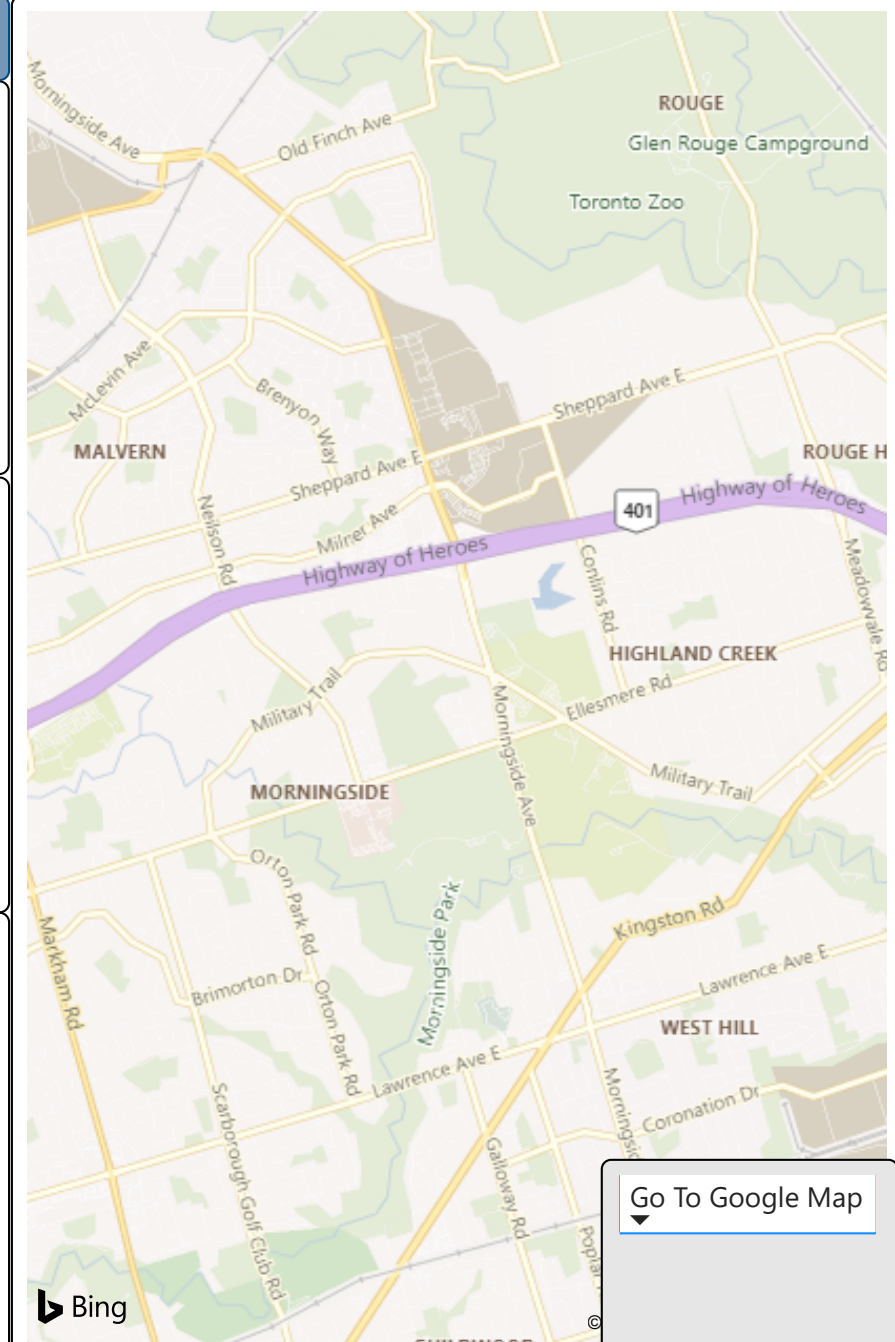
2020 Utilization Rate

15

2025 Proj Enrollment

36%

2025 Utilization Rate



[Go To Google Map](#)

Bing