

Wedgewood Junior School

Wedgewood Junior School



JK-5

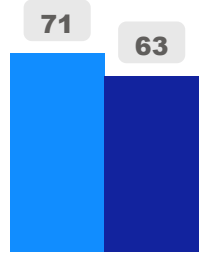
Elementary

Ward 2

Daniel MacLean

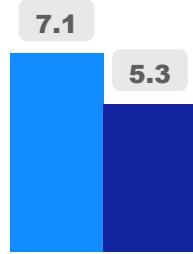
Building Age

● Building Age ● Avg Building Age By Panel



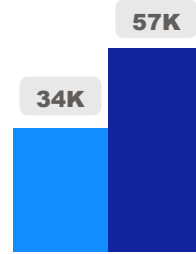
Site Size

● Site Size (Ac) ● Avg Site Size By Panel

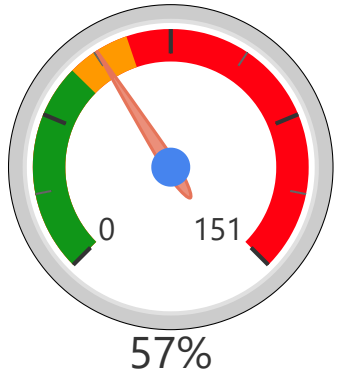


Facility Size

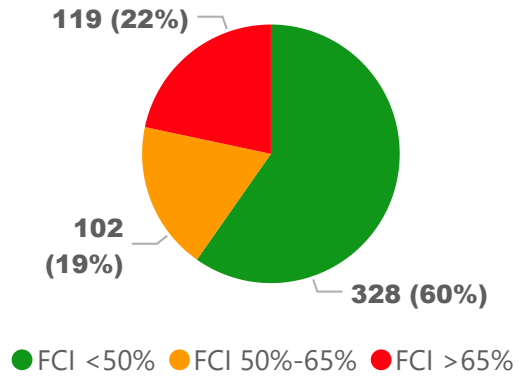
● Facility Size (Sf) ● Avg Facility Size By Panel



Current FCI

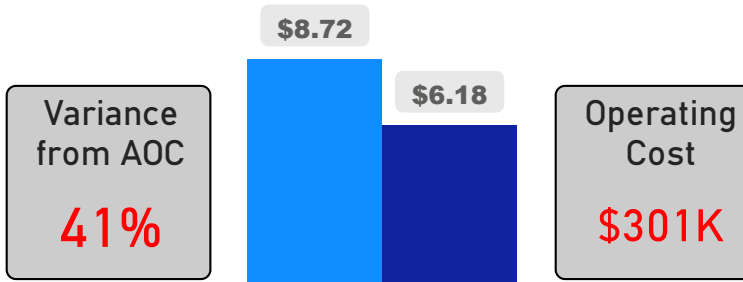


System FCI



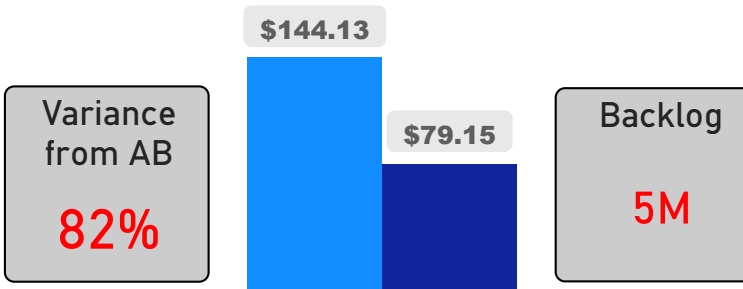
Operating Cost Per Square Foot

● Operating Cost/Sf ● Average Operating Cost (AOC)/Sf



Backlog Per Square Foot

● Backlog/Sf ● Average Backlog (AB)/Sf



438

School Capacity

479

Enrollment

109%

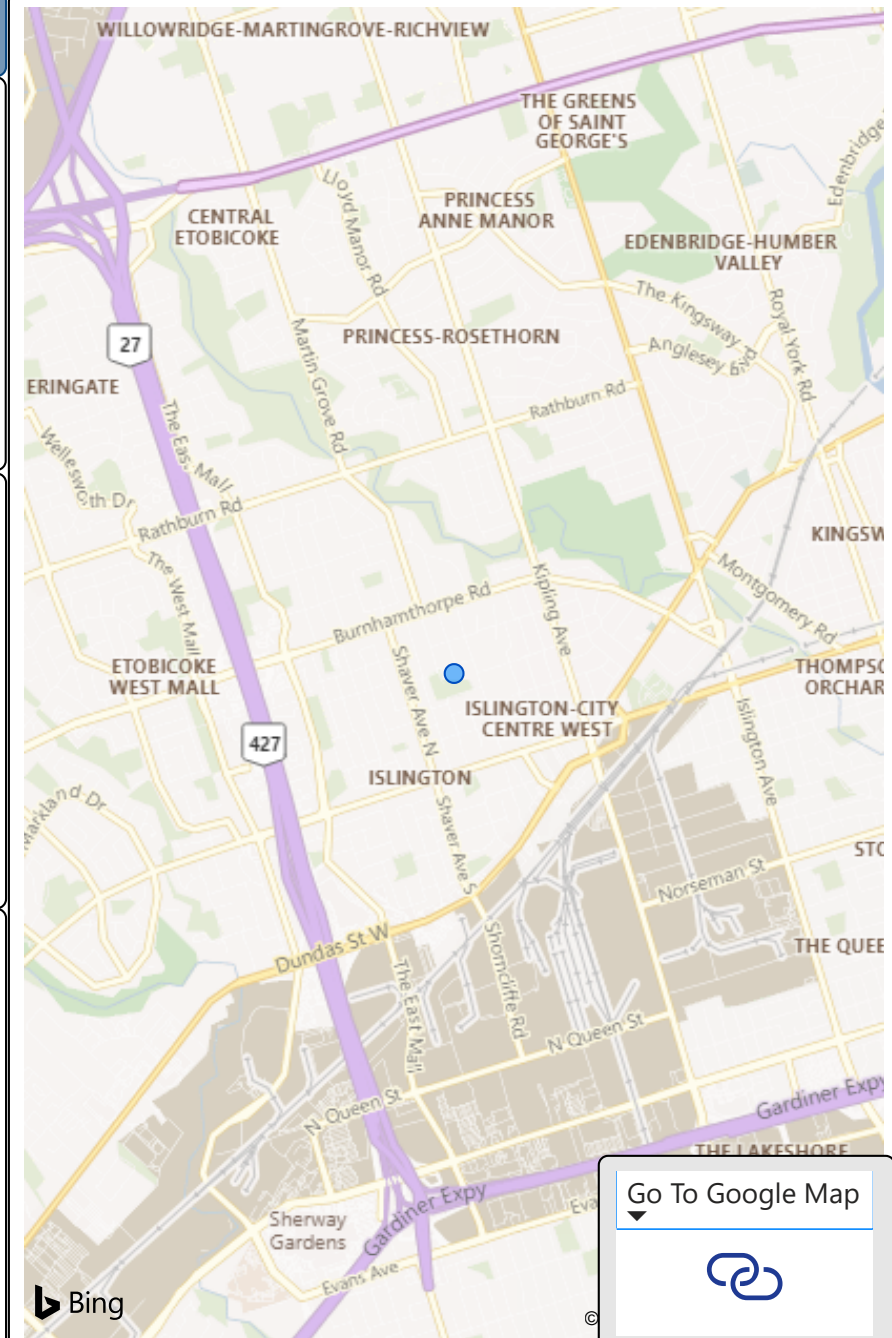
2020 Utilization Rate

681

2025 Proj Enrollment

155%

2025 Utilization Rate



[Go To Google Map](#)

