

Anson S Taylor Junior Public School

Anson S Taylor Junior Public School



JK-6

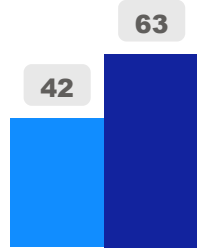
Elementary

Ward 21

Yalini Rajakulasingam

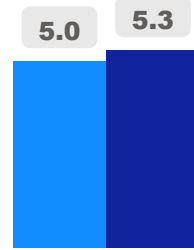
Building Age

● Building Age ● Avg Building Age By Panel



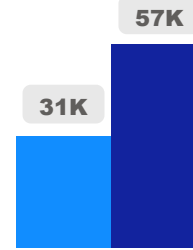
Site Size

● Site Size (Ac) ● Avg Site Size By Panel

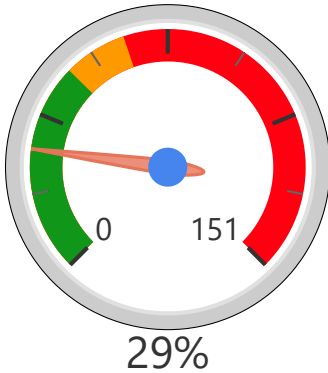


Facility Size

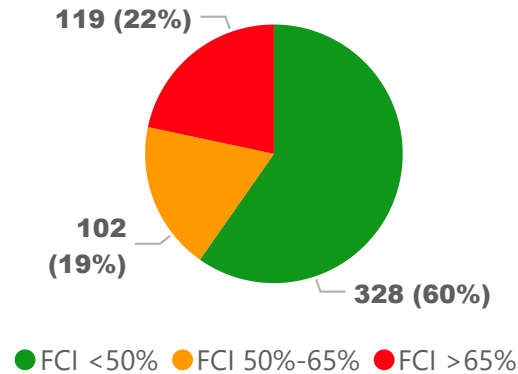
● Facility Size (Sf) ● Avg Facility Size By Panel



Current FCI

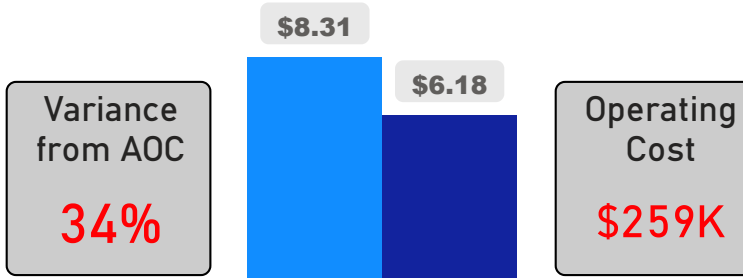


System FCI



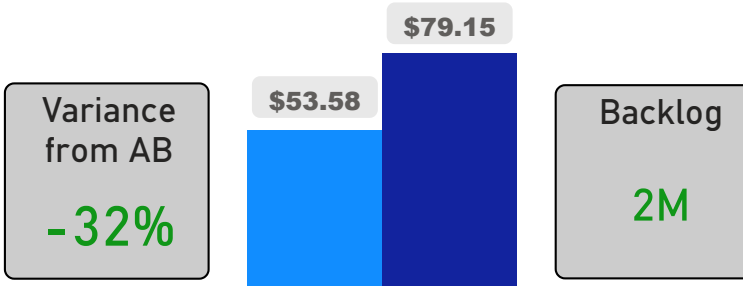
Operating Cost Per Square Foot

● Operating Cost/Sf ● Average Operating Cost (AOC)/Sf



Backlog Per Square Foot

● Backlog/Sf ● Average Backlog (AB)/Sf



254

Capacity

199

Enrollment

78%

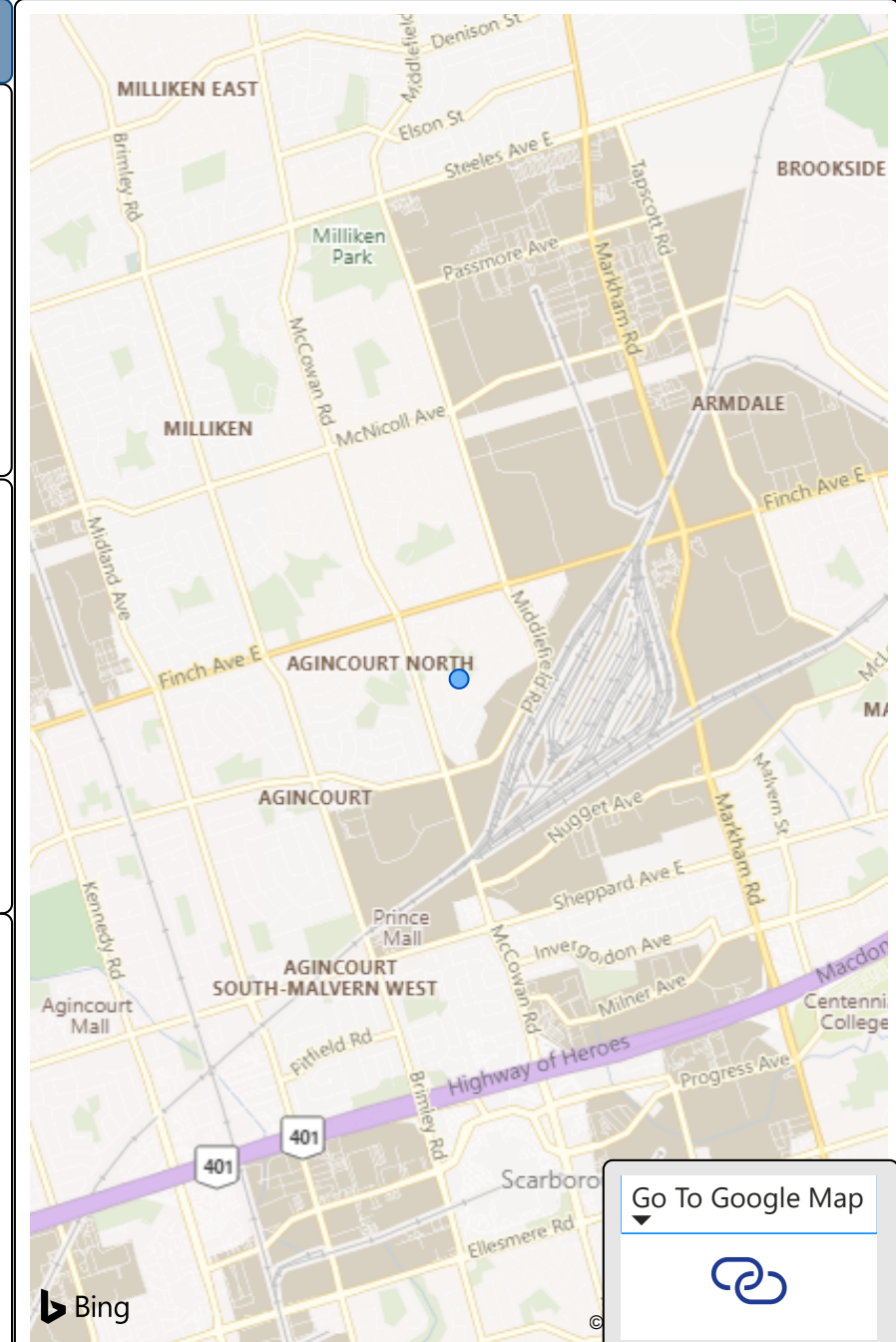
2020 Utilization Rate

166

2025 Proj Enrollment

65%

2025 Utilization Rate



[Go To Google Map](#)



Bing