

# Macklin Public School

Macklin Public School



JK-8

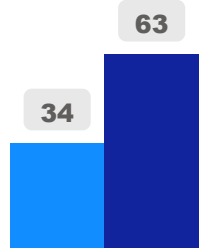
Elementary

Ward 21

Yalini Rajakulasingam

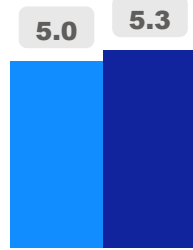
## Building Age

● Building Age ● Avg Building Age By Panel



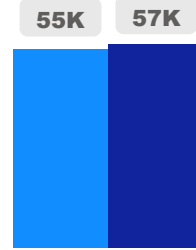
## Site Size

● Site Size (Ac) ● Avg Site Size By Panel

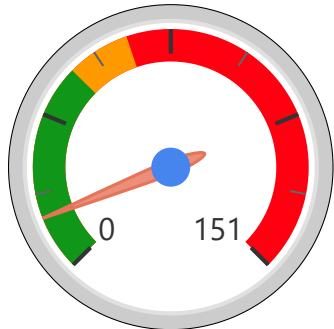


## Facility Size

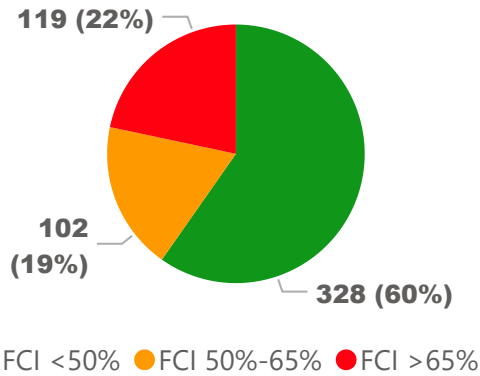
● Facility Size (Sf) ● Avg Facility Size By Panel



## Current FCI

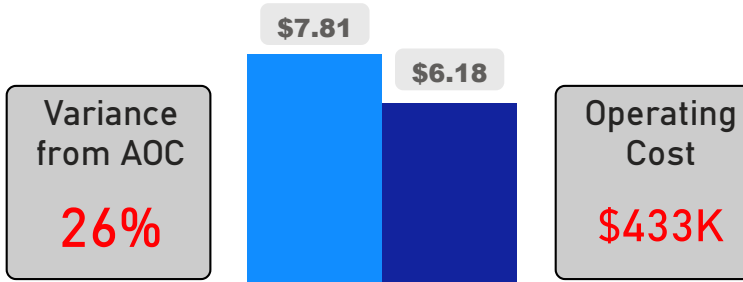


## System FCI



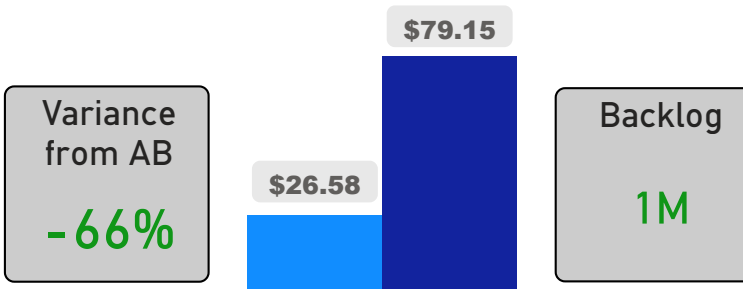
## Operating Cost Per Square Foot

● Operating Cost/Sf ● Average Operating Cost (AOC)/Sf



## Backlog Per Square Foot

● Backlog/Sf ● Average Backlog (AB)/Sf



605

Capacity

471

Enrollment

78%

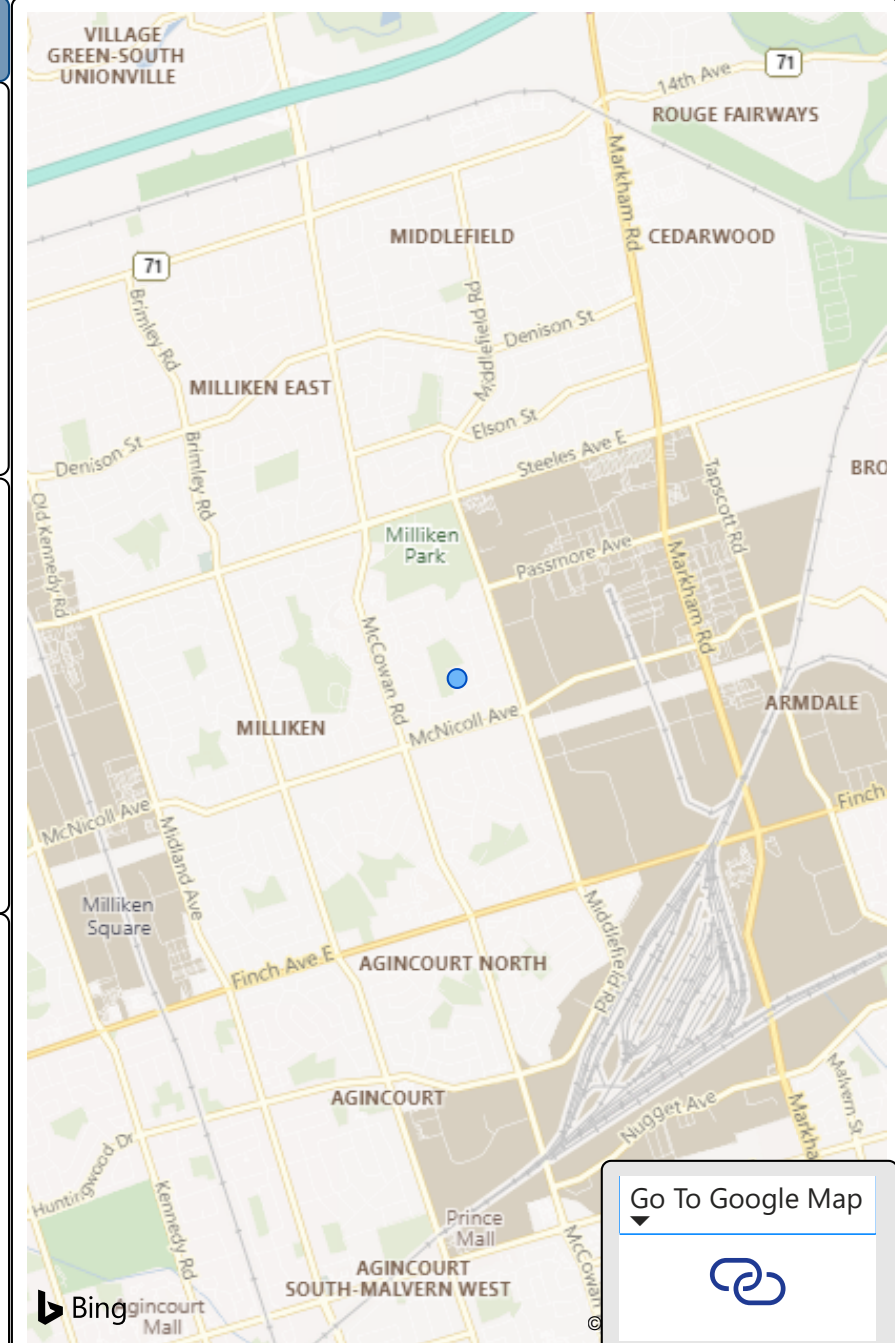
2020 Utilization Rate

412

2025 Proj Enrollment

68%

2025 Utilization Rate



[Go To Google Map](#)

