

# Alvin Curling Public School

Alvin Curling Public School



JK-8

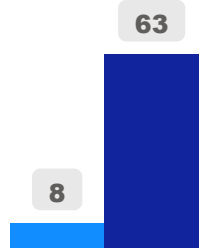
Elementary

Ward 22

Anu Sriskandarajah

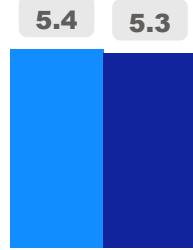
## Building Age

● Building Age ● Avg Building Age By Panel



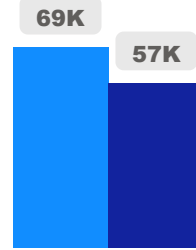
## Site Size

● Site Size (Ac) ● Avg Site Size By Panel

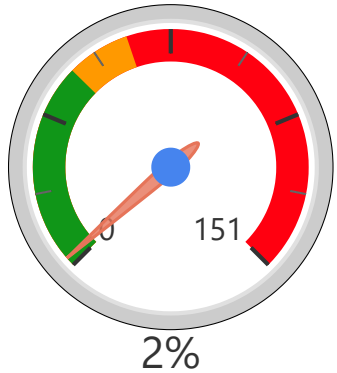


## Facility Size

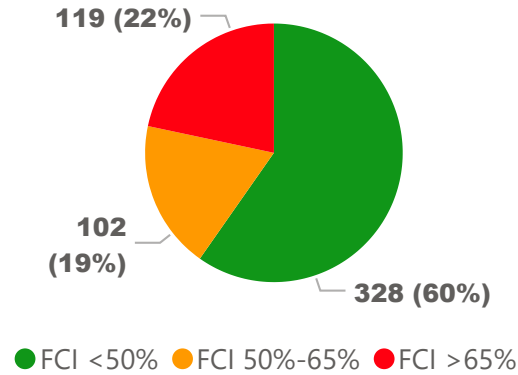
● Facility Size (Sf) ● Avg Facility Size By Panel



## Current FCI



## System FCI



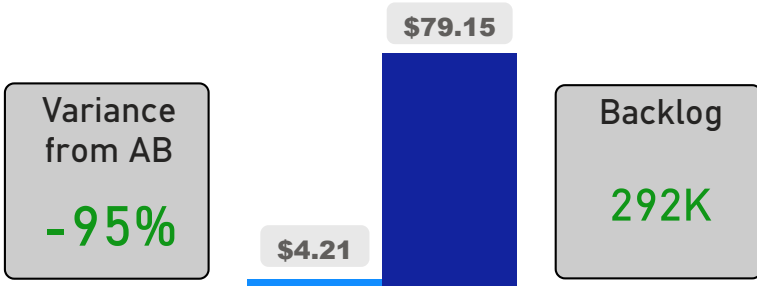
## Operating Cost Per Square Foot

● Operating Cost/Sf ● Average Operating Cost (AOC)/Sf



## Backlog Per Square Foot

● Backlog/Sf ● Average Backlog (AB)/Sf



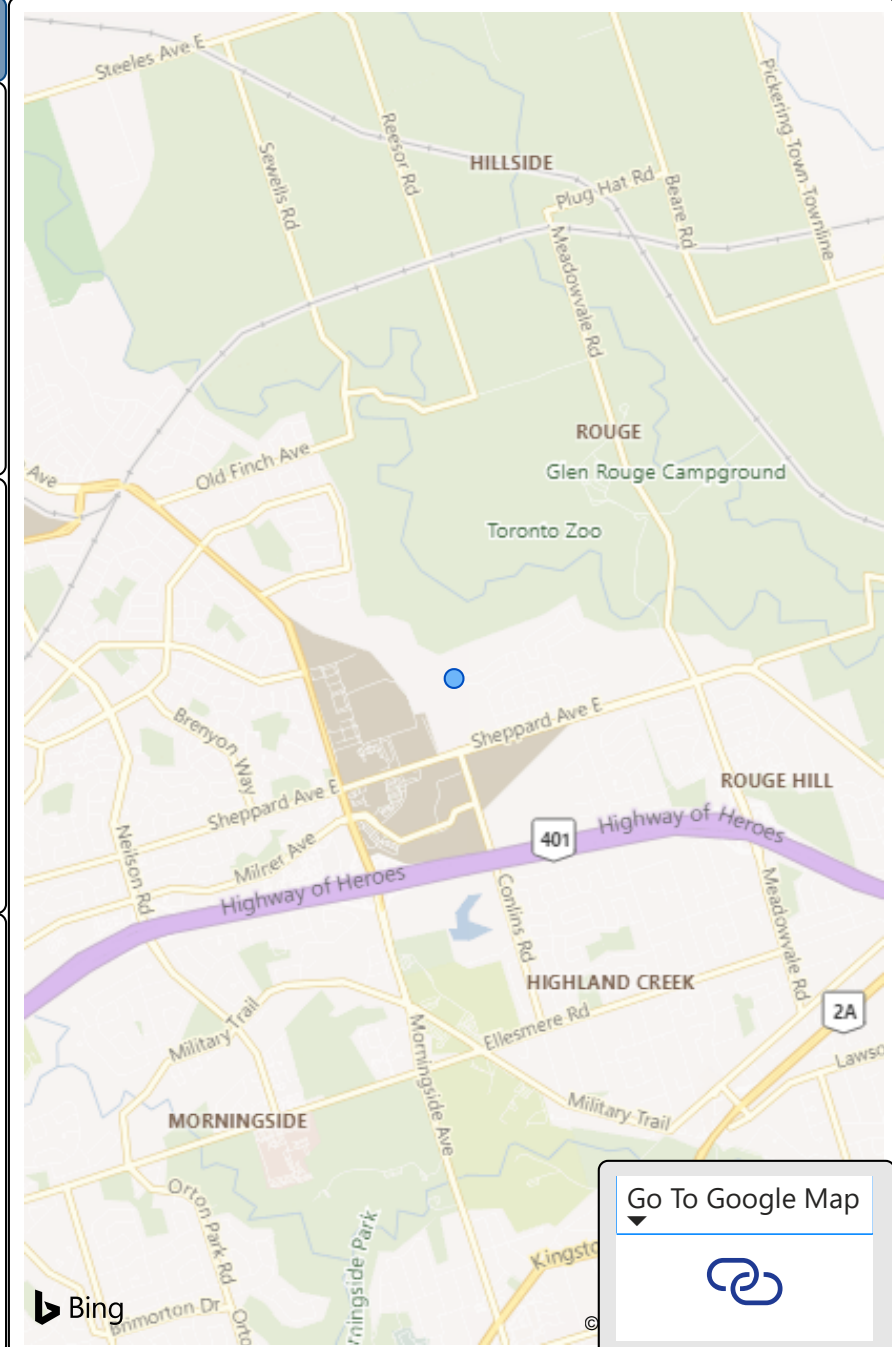
685  
Capacity

518  
Enrollment

76%  
2020 Utilization Rate

481  
2025 Proj Enrollment

70%  
2025 Utilization Rate



Go To Google Map



Bing