

Chief Dan George Public School

Chief Dan George Public School



JK-8

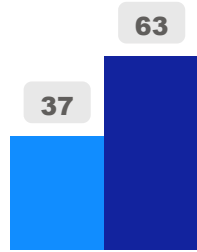
Elementary

Ward 22

Anu Sriskandarajah

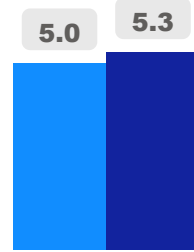
Building Age

● Building Age ● Avg Building Age By Panel



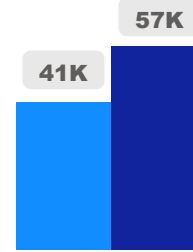
Site Size

● Site Size (Ac) ● Avg Site Size By Panel

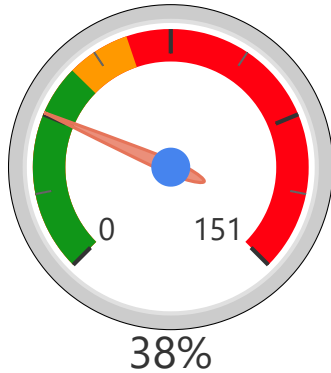


Facility Size

● Facility Size (Sf) ● Avg Facility Size By Panel



Current FCI

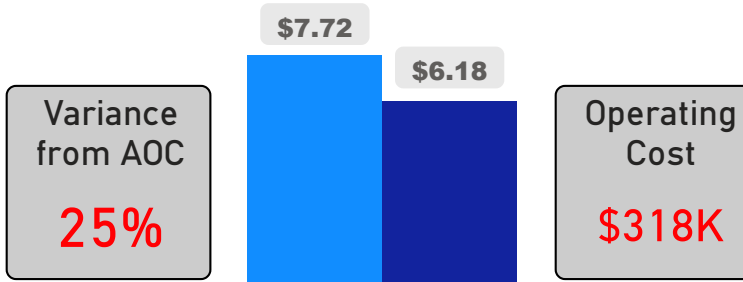


System FCI



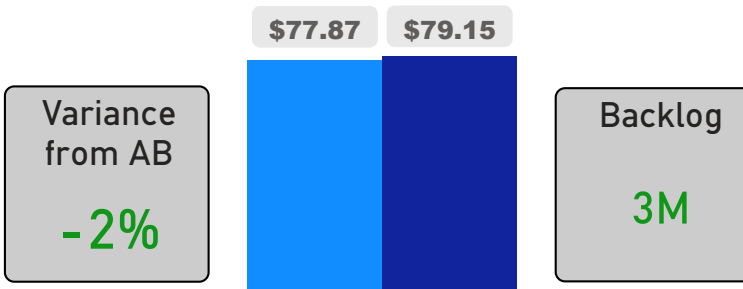
Operating Cost Per Square Foot

● Operating Cost/Sf ● Average Operating Cost (AOC)/Sf



Backlog Per Square Foot

● Backlog/Sf ● Average Backlog (AB)/Sf



360

Capacity

267

Enrollment

303

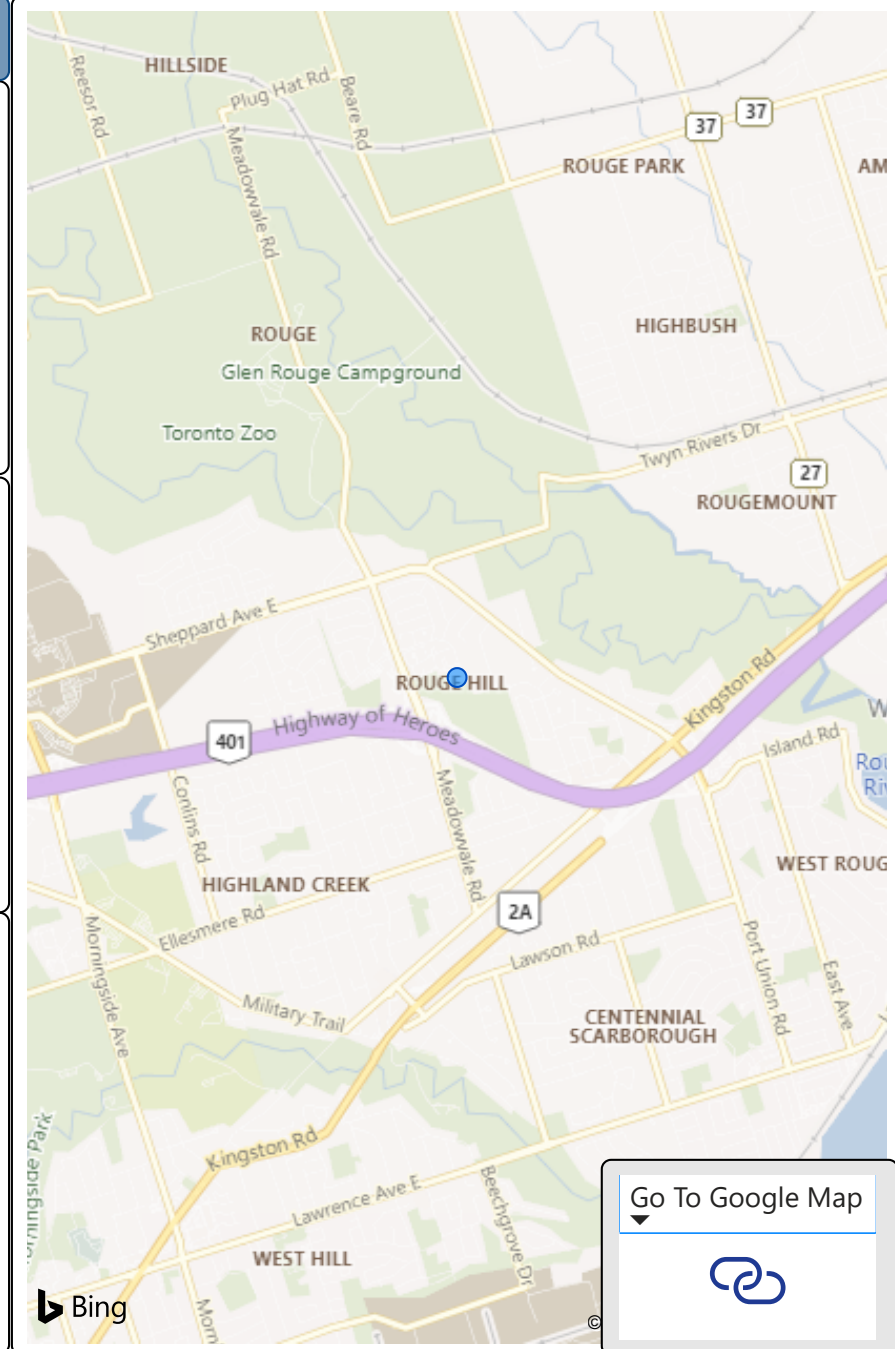
2025 Proj Enrollment

74%

2020 Utilization Rate

84%

2025 Utilization Rate



[Go To Google Map](#)

