

Sir Adam Beck Junior School

Sir Adam Beck Junior School



JK-5

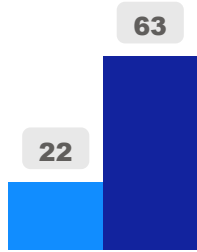
Elementary

Ward 3

Patrick Nunziata

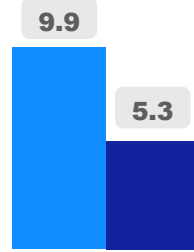
Building Age

● Building Age ● Avg Building Age By Panel



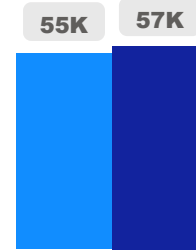
Site Size

● Site Size (Ac) ● Avg Site Size By Panel

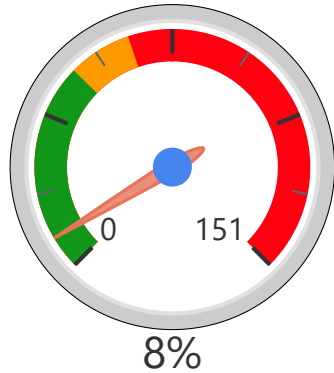


Facility Size

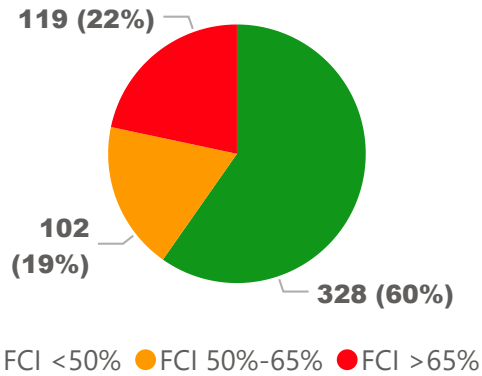
● Facility Size (Sf) ● Avg Facility Size By Panel



Current FCI

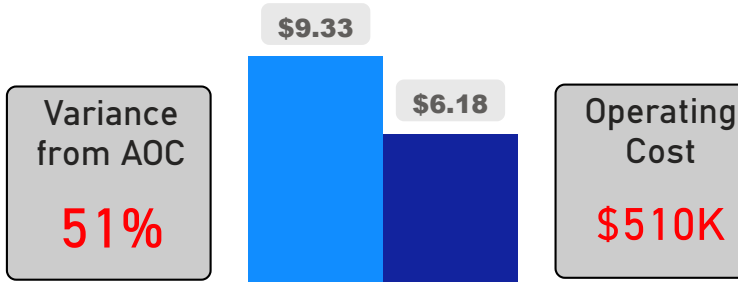


System FCI



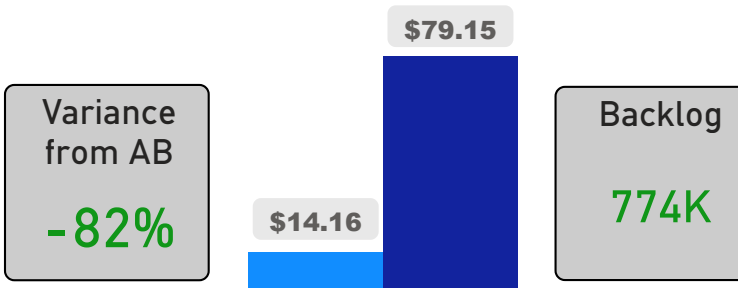
Operating Cost Per Square Foot

● Operating Cost/Sf ● Average Operating Cost (AOC)/Sf



Backlog Per Square Foot

● Backlog/Sf ● Average Backlog (AB)/Sf



533

School Capacity

392

Enrollment

74%

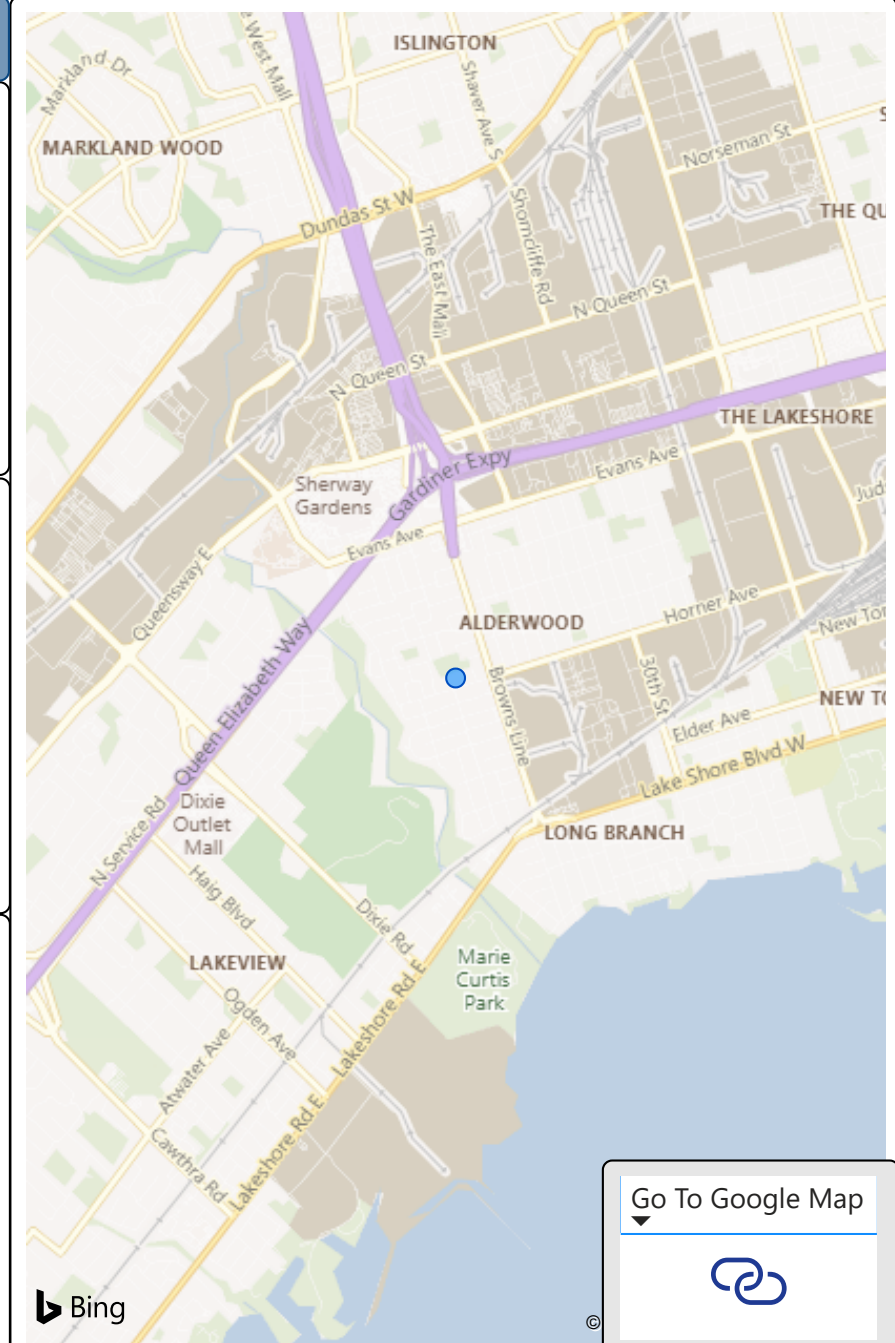
2020 Utilization Rate

439

2025 Proj Enrollment

82%

2025 Utilization Rate



Go To Google Map



Bing