

Amesbury Middle School

Amesbury Middle School



6-8

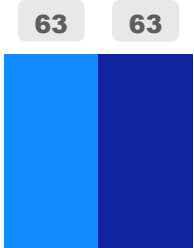
Elementary

Ward 6

Chris Tonks

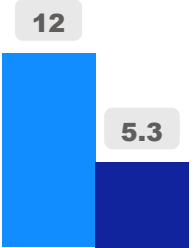
Building Age

● Building Age ● Avg Building Age By Panel



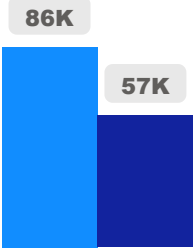
Site Size

● Site Size (Ac) ● Avg Site Size By Panel

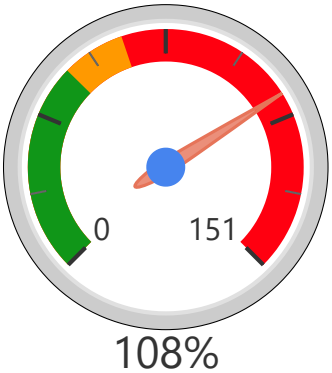


Facility Size

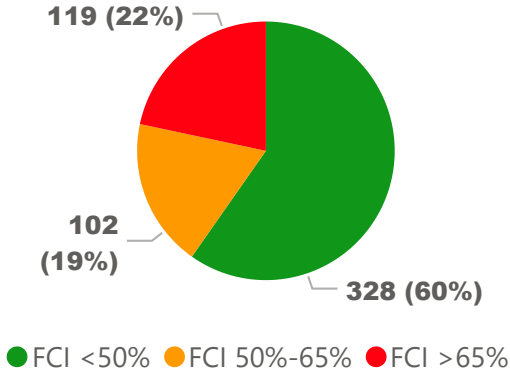
● Facility Size (Sf) ● Avg Facility Size By Panel



Current FCI

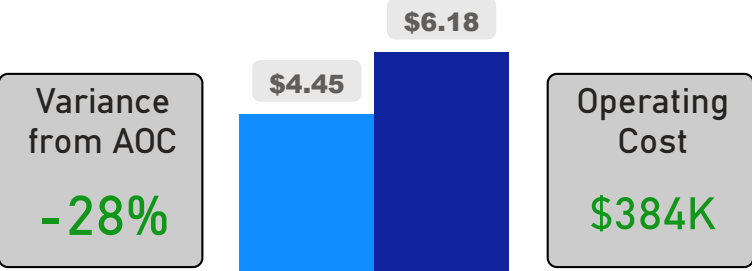


System FCI



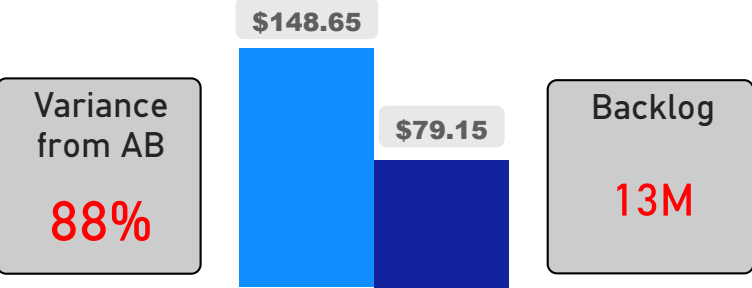
Operating Cost Per Square Foot

● Operating Cost/Sf ● Average Operating Cost (AOC)/Sf



Backlog Per Square Foot

● Backlog/Sf ● Average Backlog (AB)/Sf



577

School Capacity

308

Enrollment

258

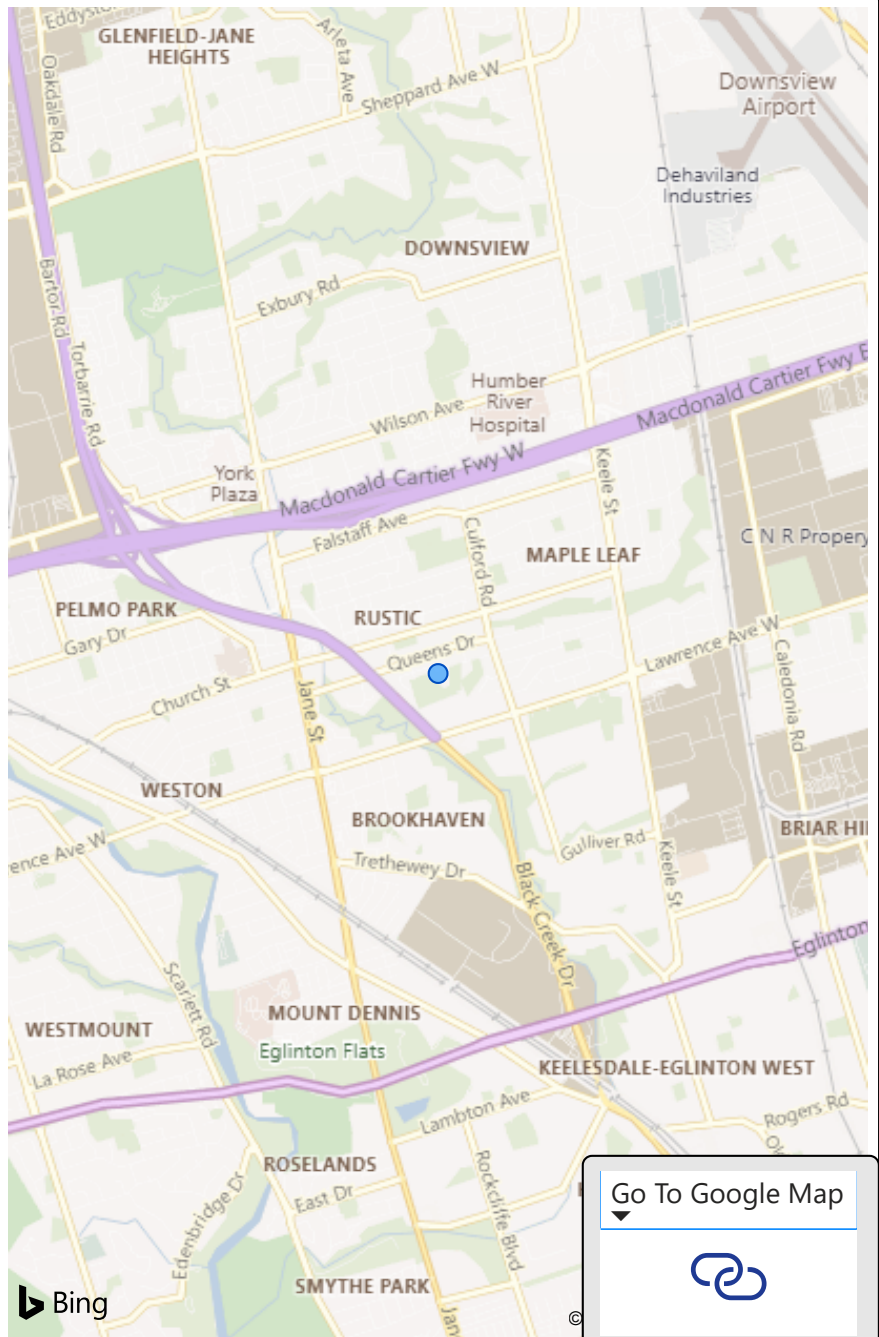
2025 Proj Enrollment

53%

2020 Utilization Rate

45%

2025 Utilization Rate



[Go To Google Map](#)

