

# George Anderson Public School

George Anderson Public School



JK-5

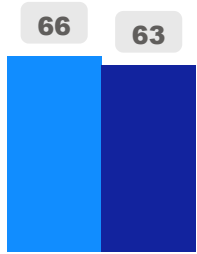
Elementary

Ward 6

Chris Tonks

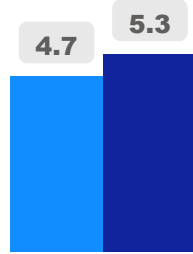
## Building Age

● Building Age ● Avg Building Age By Panel



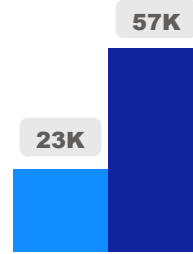
## Site Size

● Site Size (Ac) ● Avg Site Size By Panel

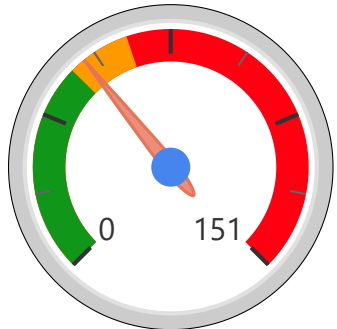


## Facility Size

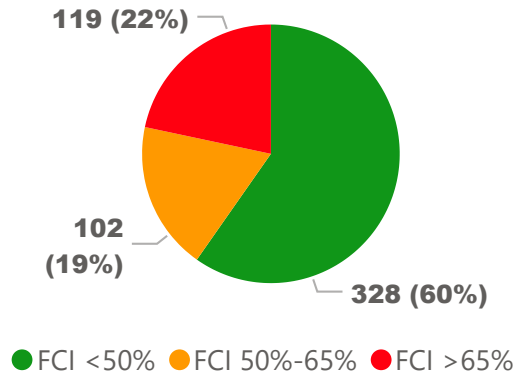
● Facility Size (Sf) ● Avg Facility Size By Panel



## Current FCI



## System FCI



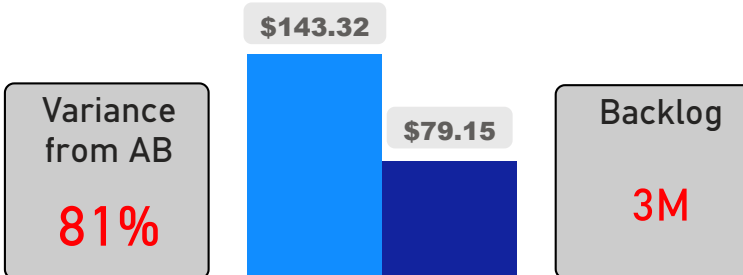
## Operating Cost Per Square Foot

● Operating Cost/Sf ● Average Operating Cost (AOC)/Sf



## Backlog Per Square Foot

● Backlog/Sf ● Average Backlog (AB)/Sf



202

School Capacity

154

Enrollment

164

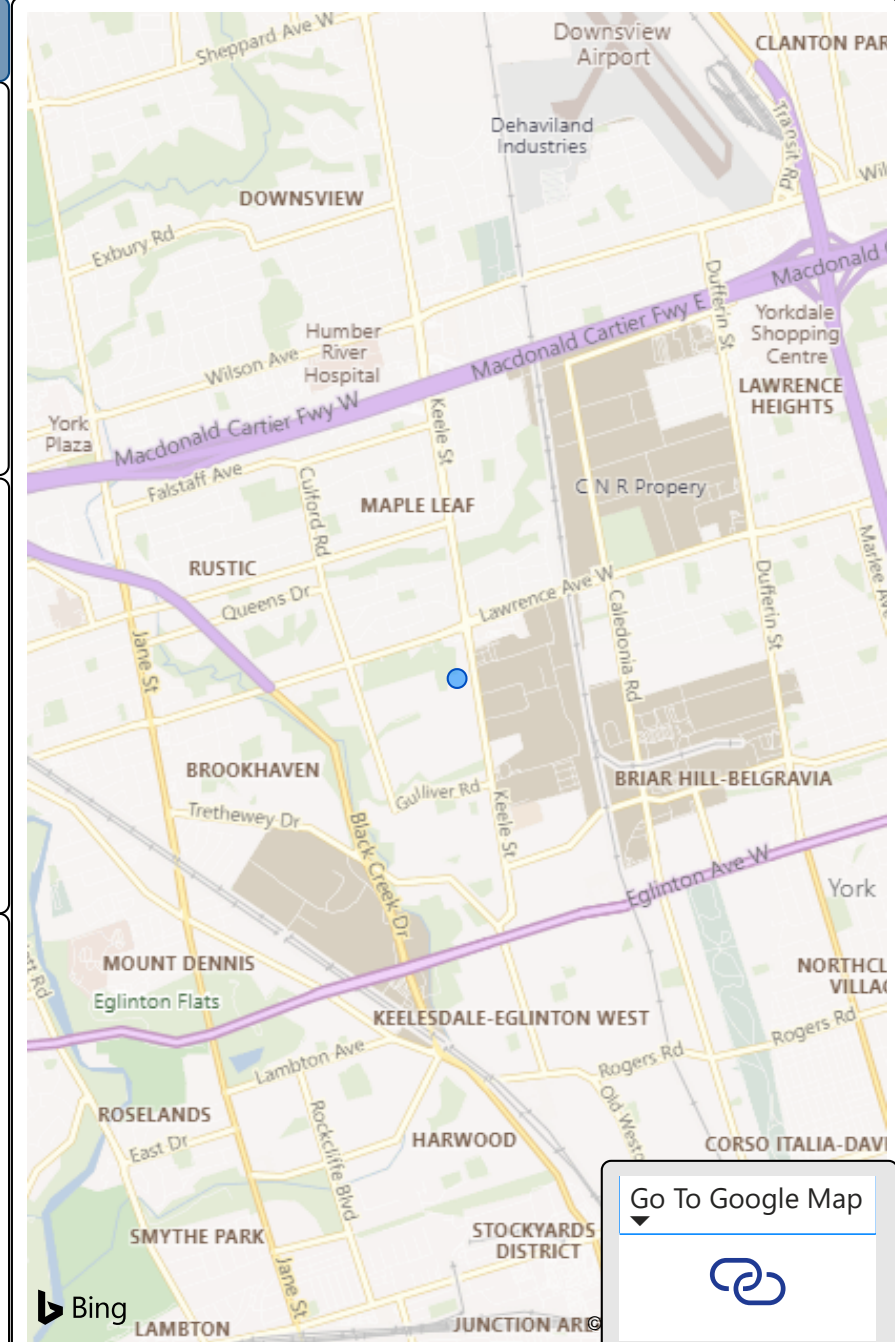
2025 Proj Enrollment

76%

2020 Utilization Rate

81%

2025 Utilization Rate



[Go To Google Map](#)



Bing