

# Howard Junior Public School

Howard Junior Public School



JK-6

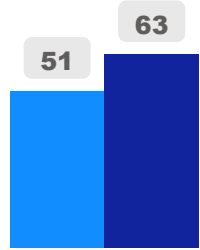
Elementary

Ward 7

Robin Pilkey

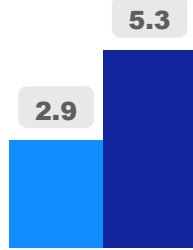
## Building Age

● Building Age ● Avg Building Age By Panel



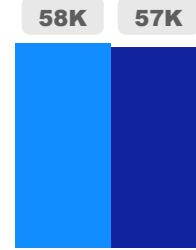
## Site Size

● Site Size (Ac) ● Avg Site Size By Panel

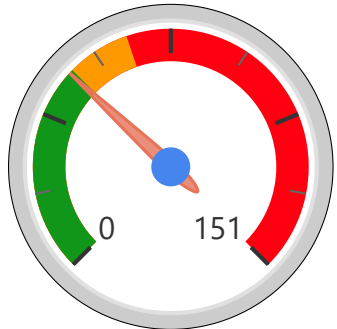


## Facility Size

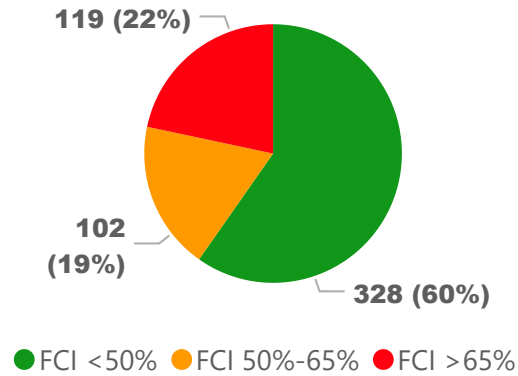
● Facility Size (Sf) ● Avg Facility Size By Panel



## Current FCI

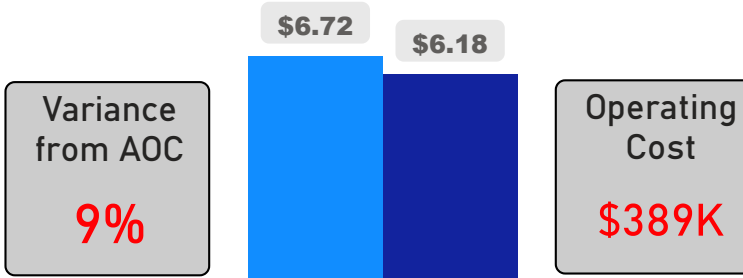


## System FCI



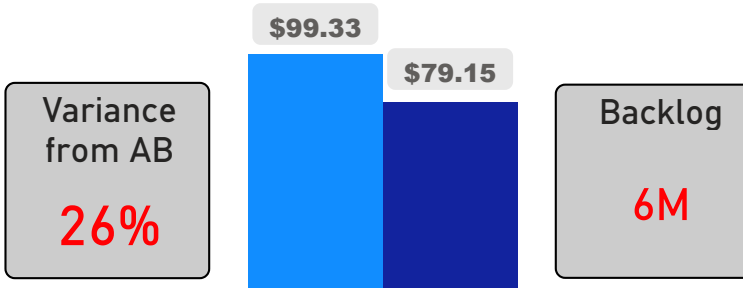
## Operating Cost Per Square Foot

● Operating Cost/Sf ● Average Operating Cost (AOC)/Sf



## Backlog Per Square Foot

● Backlog/Sf ● Average Backlog (AB)/Sf



577

School Capacity

421

Enrollment

73%

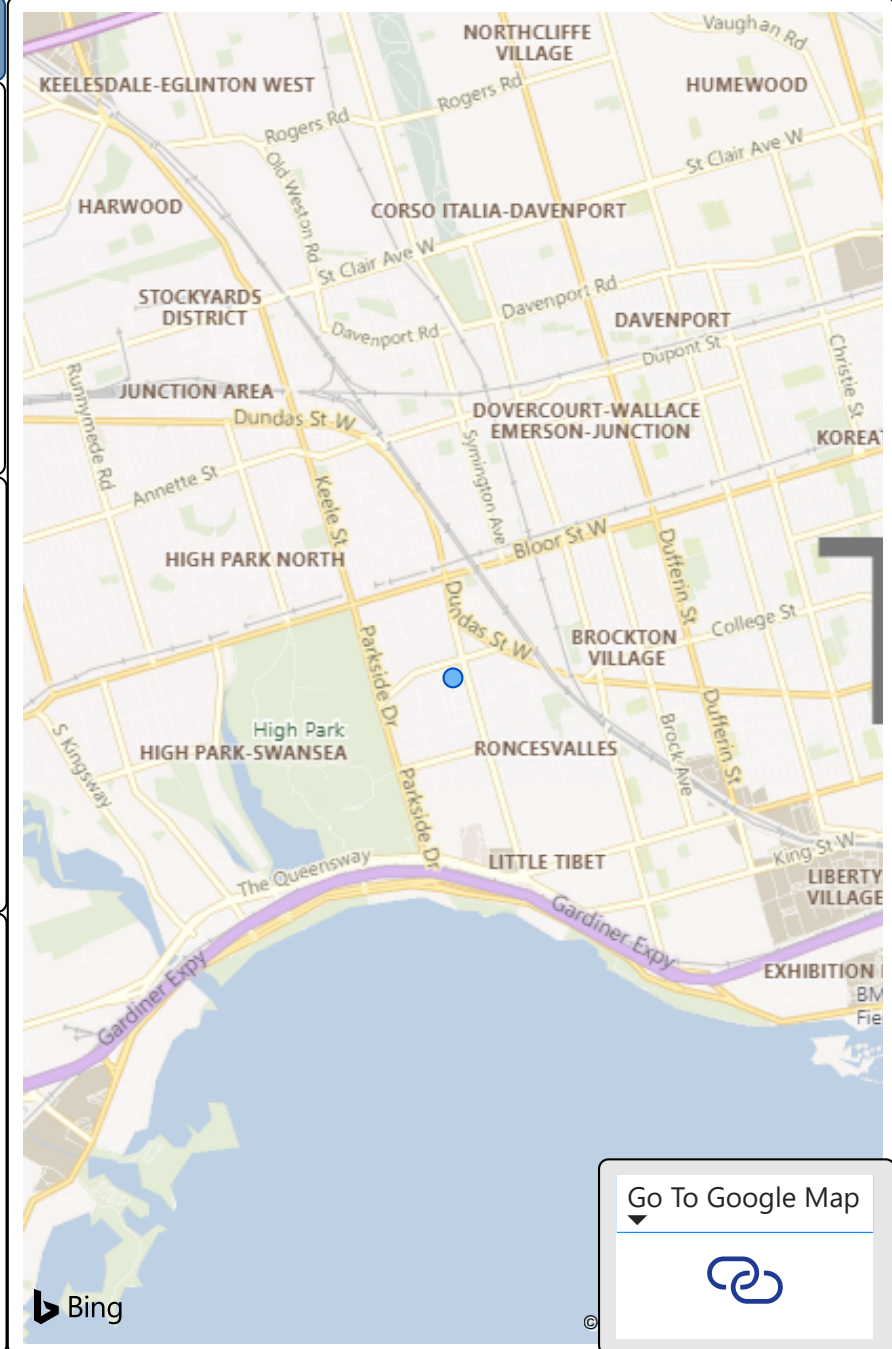
2020 Utilization Rate

580

2025 Proj Enrollment

101%

2025 Utilization Rate



[Go To Google Map](#)



Bing