

King George Junior Public School

King George Junior Public School



JK-6

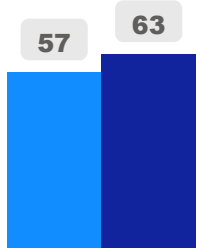
Elementary

Ward 7

Robin Pilkey

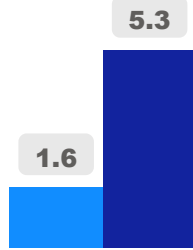
Building Age

● Building Age ● Avg Building Age By Panel



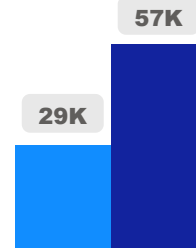
Site Size

● Site Size (Ac) ● Avg Site Size By Panel

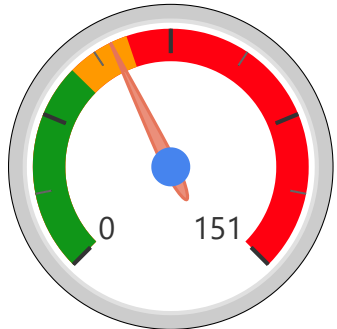


Facility Size

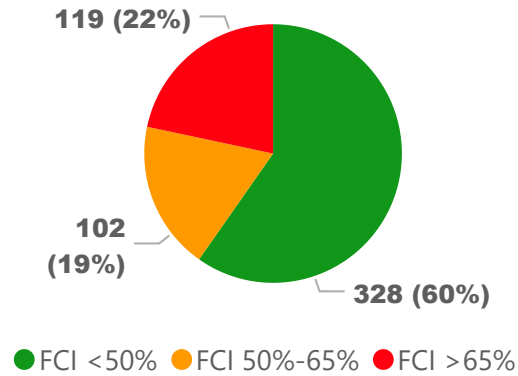
● Facility Size (Sf) ● Avg Facility Size By Panel



Current FCI

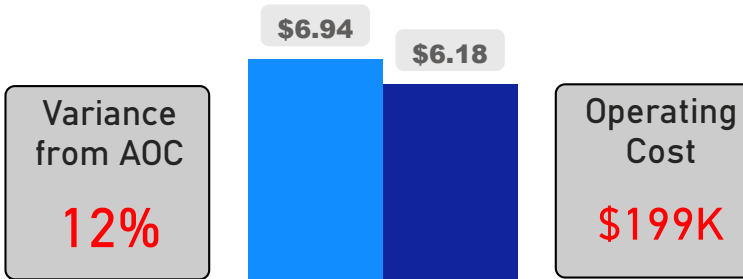


System FCI



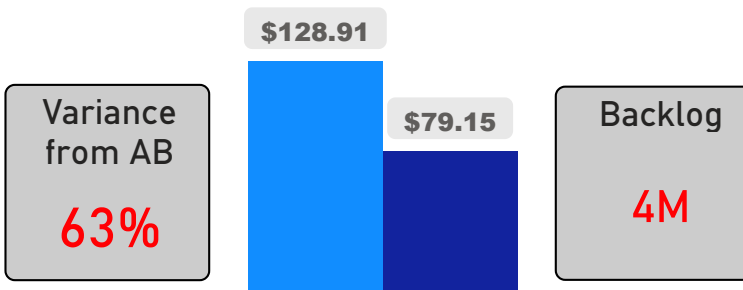
Operating Cost Per Square Foot

● Operating Cost/Sf ● Average Operating Cost (AOC)/Sf



Backlog Per Square Foot

● Backlog/Sf ● Average Backlog (AB)/Sf



231

School Capacity

264

Enrollment

114%

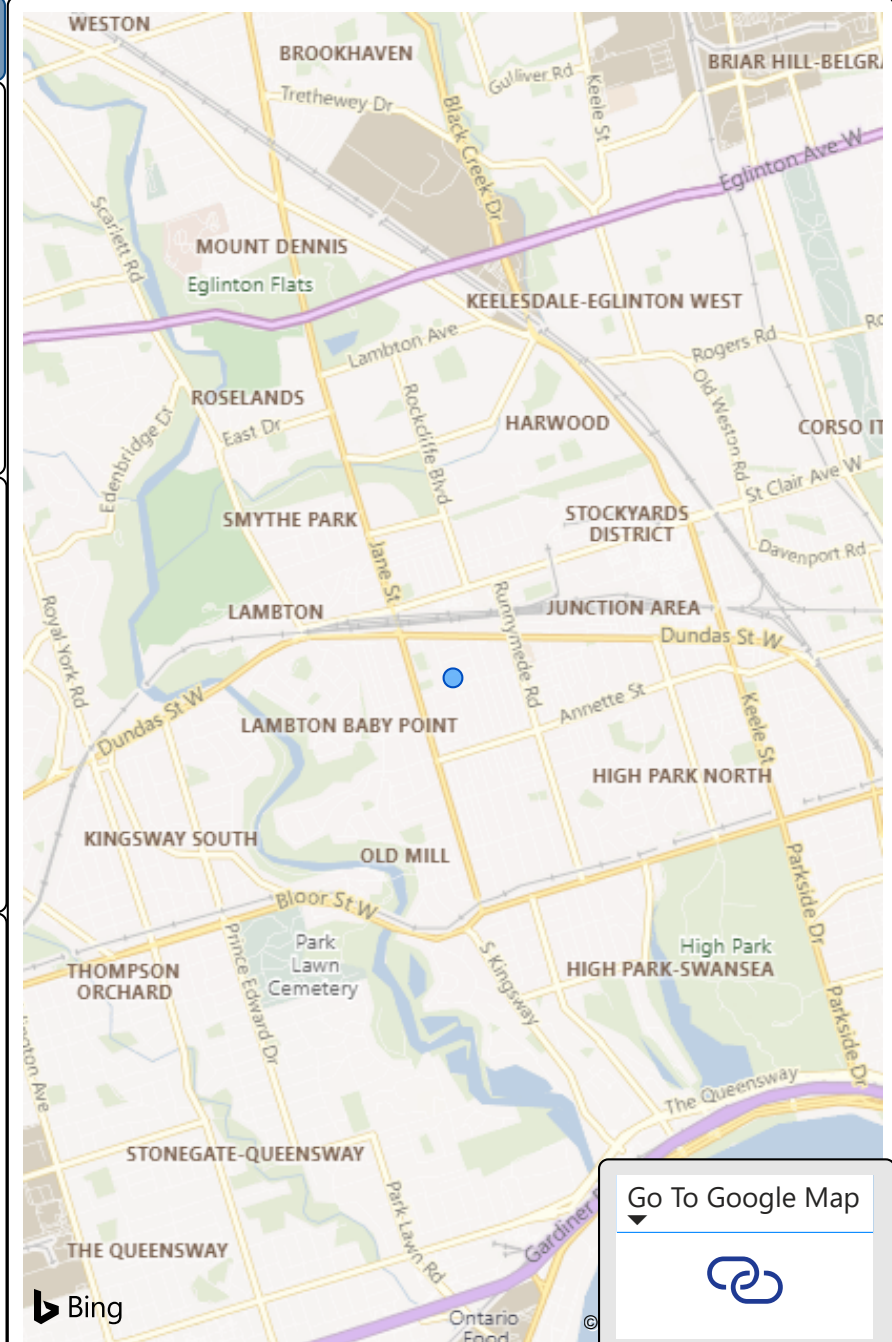
2020 Utilization Rate

255

2025 Proj Enrollment

110%

2025 Utilization Rate



[Go To Google Map](#)



Bing