

# Runnymede Junior and Senior Public School

Runnymede Junior and Senior Publi... ▾



JK-8

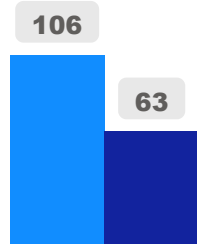
Elementary

Ward 7

Robin Pilkey

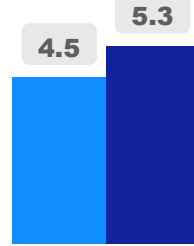
## Building Age

● Building Age ● Avg Building Age By Panel



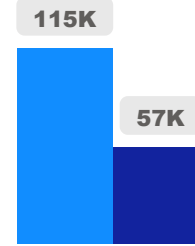
## Site Size

● Site Size (Ac) ● Avg Site Size By Panel

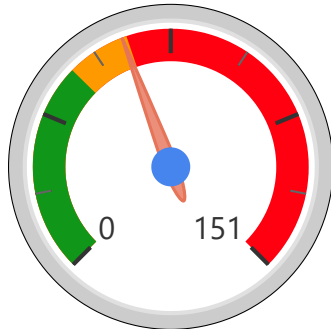


## Facility Size

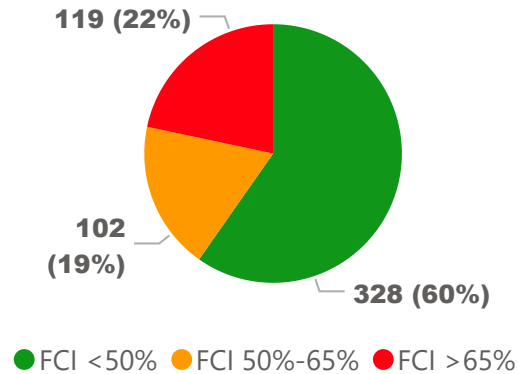
● Facility Size (Sf) ● Avg Facility Size By Panel



## Current FCI

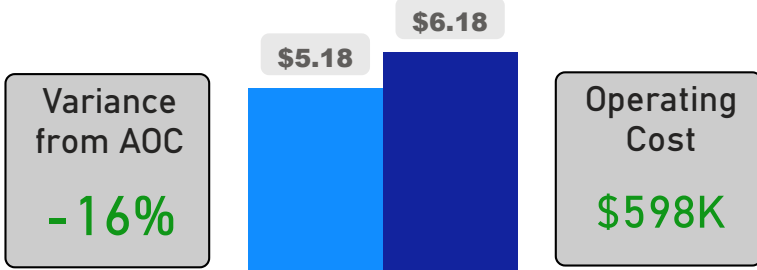


## System FCI



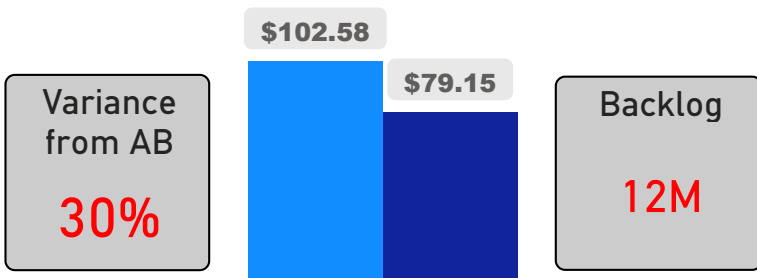
## Operating Cost Per Square Foot

● Operating Cost/Sf ● Average Operating Cost (AOC)/Sf



## Backlog Per Square Foot

● Backlog/Sf ● Average Backlog (AB)/Sf



1,011

School Capacity

954

Enrollment

94%

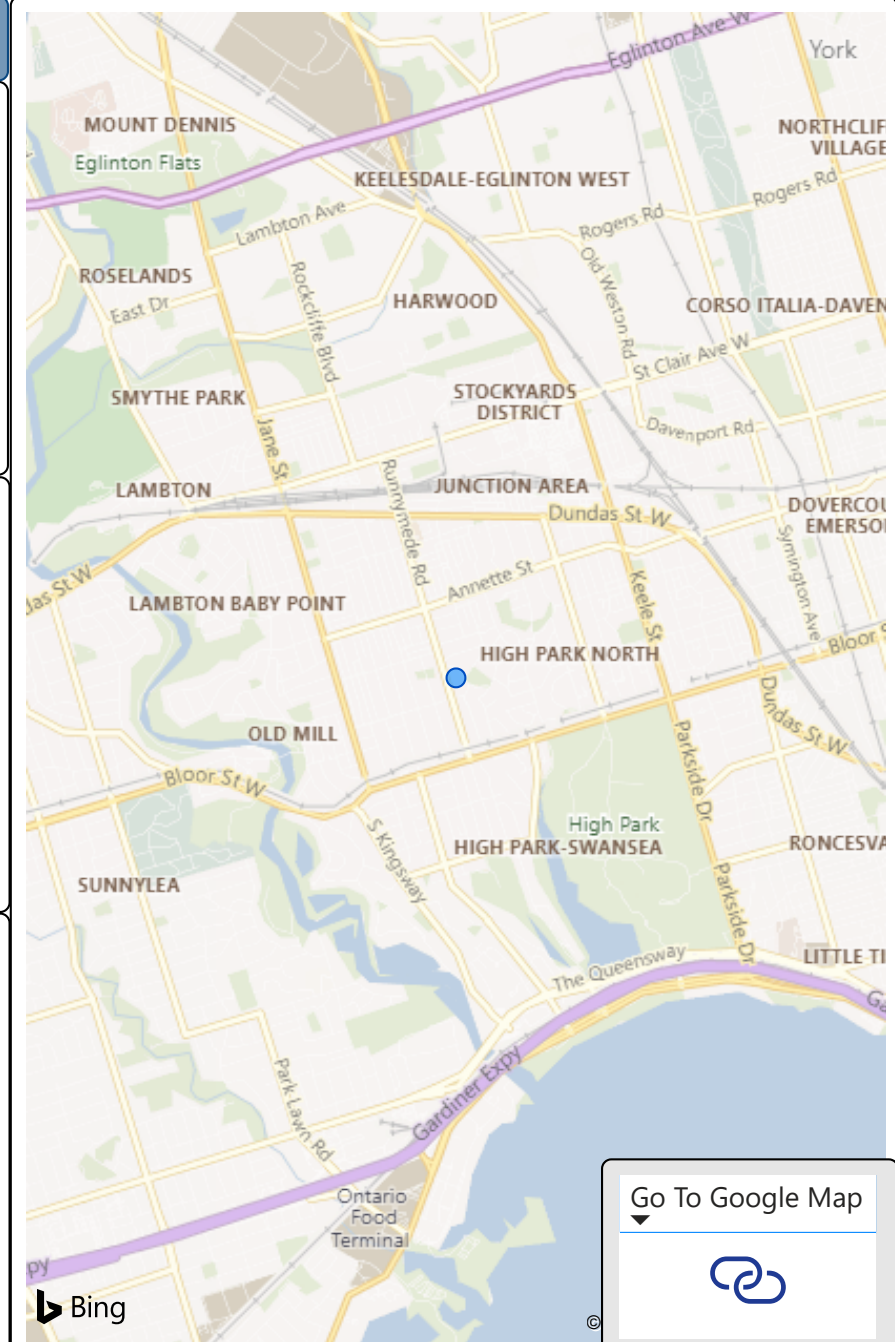
2020 Utilization Rate

927

2025 Proj Enrollment

92%

2025 Utilization Rate



Go To Google Map

