

McMurrich Junior Public School

McMurrich Junior Public School



JK-6

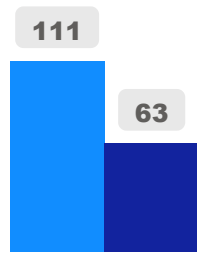
Elementary

Ward 8

Shelley Laskin

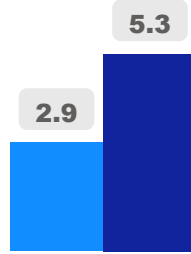
Building Age

● Building Age ● Avg Building Age By Panel



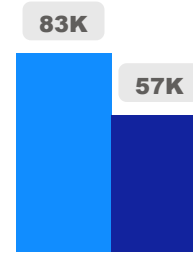
Site Size

● Site Size (Ac) ● Avg Site Size By Panel

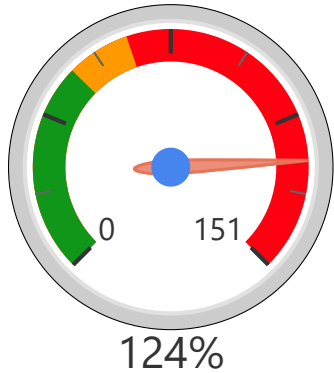


Facility Size

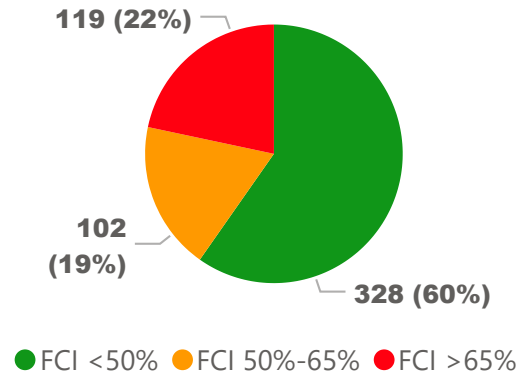
● Facility Size (Sf) ● Avg Facility Size By Panel



Current FCI

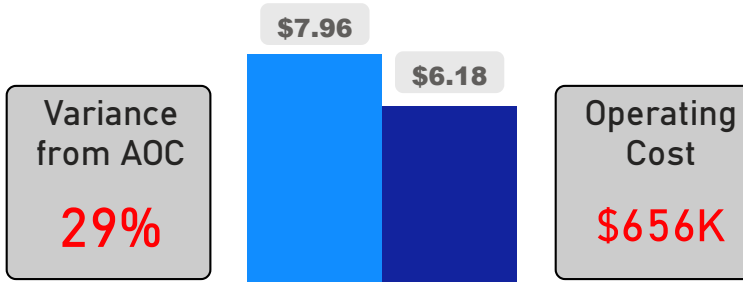


System FCI



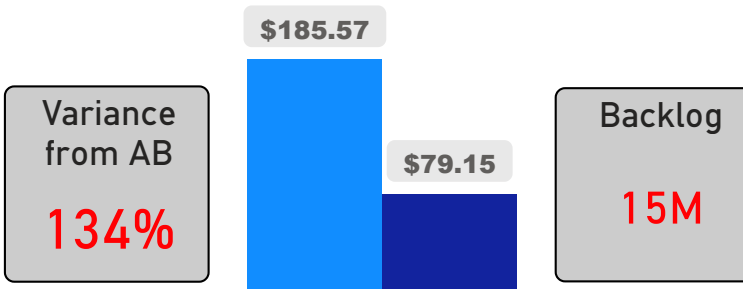
Operating Cost Per Square Foot

● Operating Cost/Sf ● Average Operating Cost (AOC)/Sf



Backlog Per Square Foot

● Backlog/Sf ● Average Backlog (AB)/Sf



624

School Capacity

519

Enrollment

83%

2020 Utilization Rate

594

2025 Proj Enrollment

95%

2025 Utilization Rate

