

West Preparatory Junior Public School

West Preparatory Junior Public School



JK-6

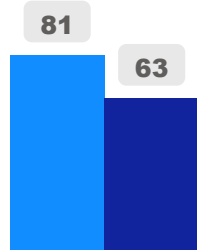
Elementary

Ward 8

Shelley Laskin

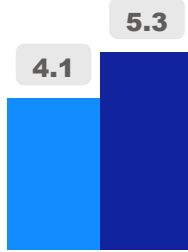
Building Age

● Building Age ● Avg Building Age By Panel



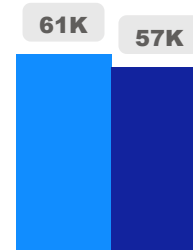
Site Size

● Site Size (Ac) ● Avg Site Size By Panel

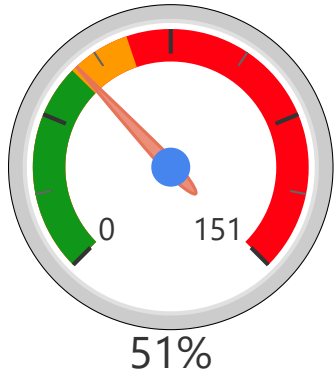


Facility Size

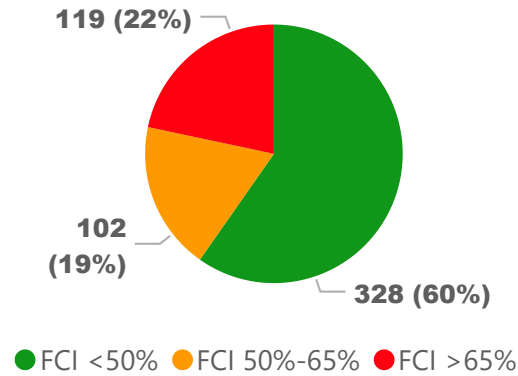
● Facility Size (Sf) ● Avg Facility Size By Panel



Current FCI

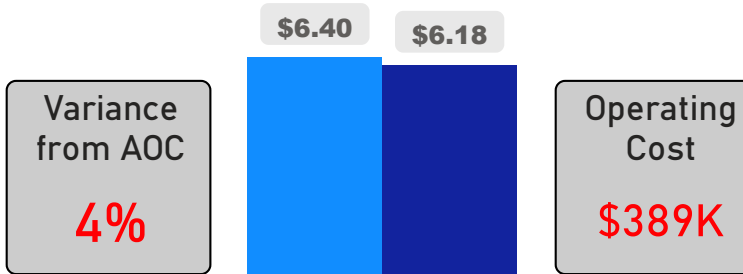


System FCI



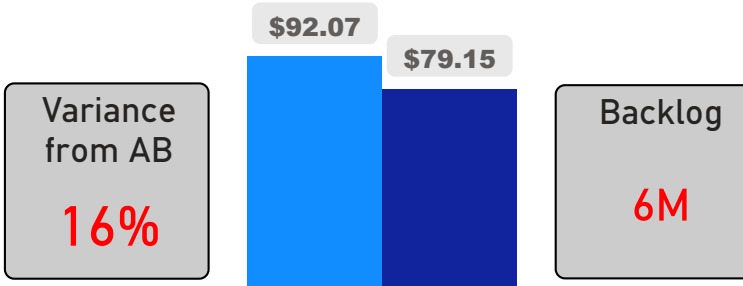
Operating Cost Per Square Foot

● Operating Cost/Sf ● Average Operating Cost (AOC)/Sf



Backlog Per Square Foot

● Backlog/Sf ● Average Backlog (AB)/Sf



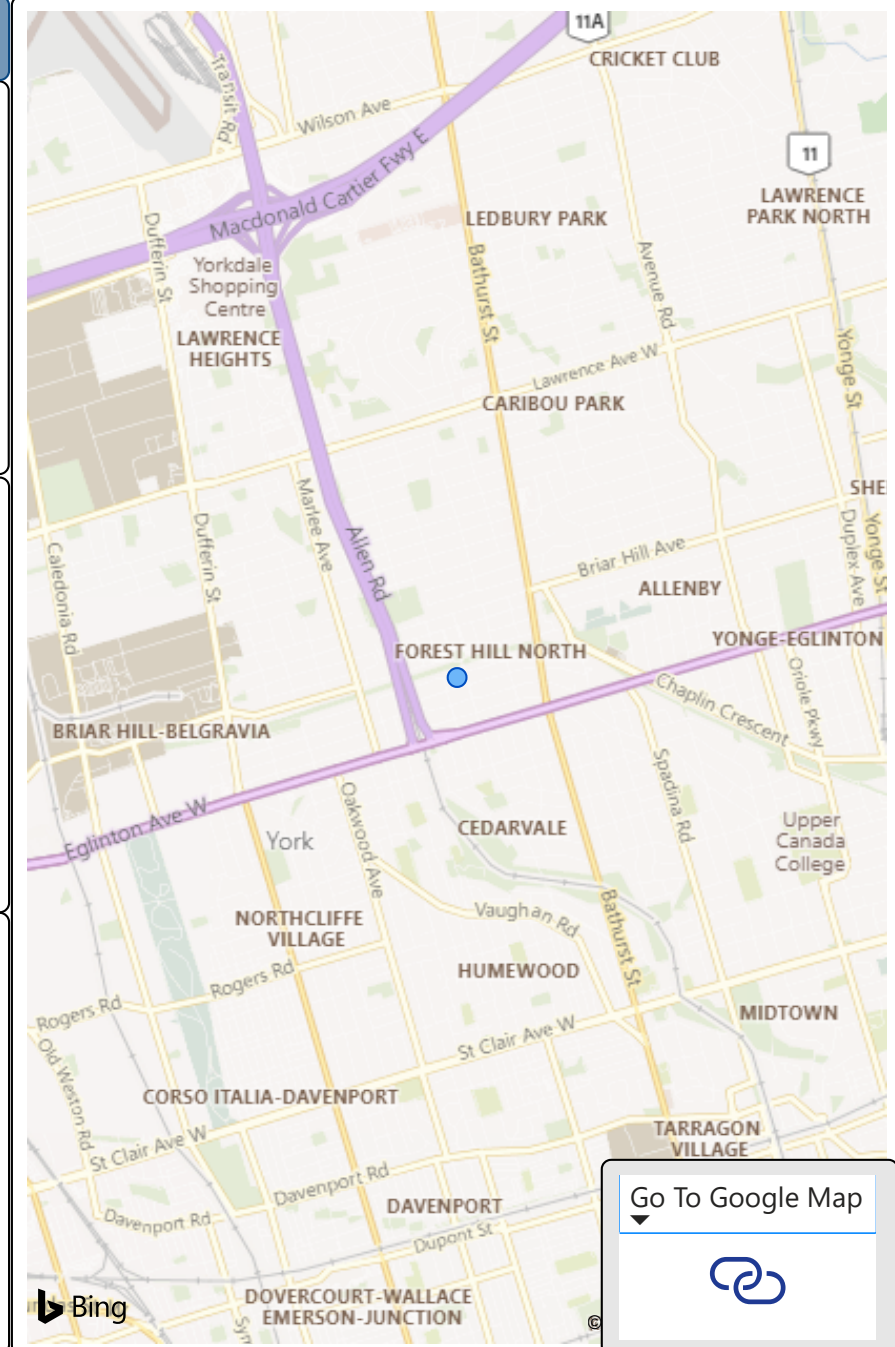
529
School Capacity

496
Enrollment

94%
2020 Utilization Rate

500
2025 Proj Enrollment

95%
2025 Utilization Rate



[Go To Google Map](#)

