

# General Mercer Junior Public School

General Mercer Junior Public School



JK-6

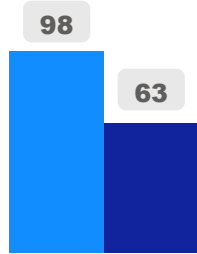
Elementary

Ward 9

Stephanie Donaldson

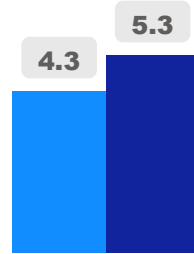
## Building Age

● Building Age ● Avg Building Age By Panel



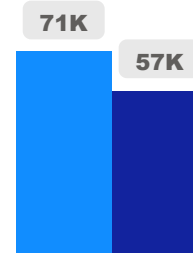
## Site Size

● Site Size (Ac) ● Avg Site Size By Panel

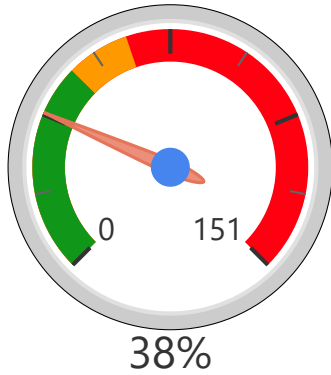


## Facility Size

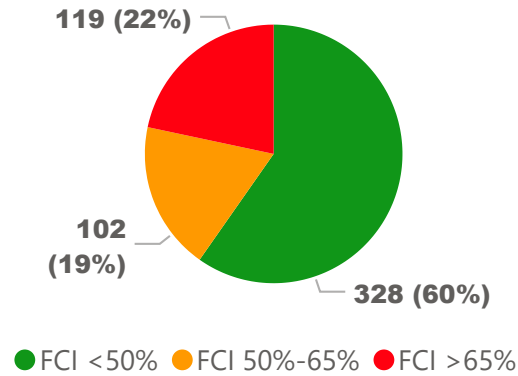
● Facility Size (Sf) ● Avg Facility Size By Panel



## Current FCI

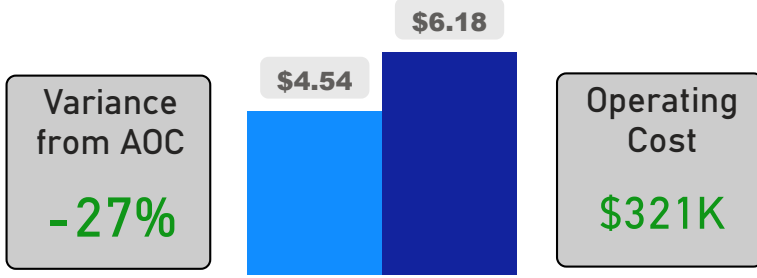


## System FCI



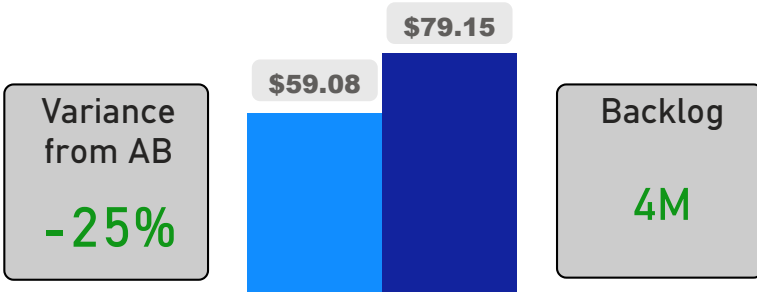
## Operating Cost Per Square Foot

● Operating Cost/Sf ● Average Operating Cost (AOC)/Sf



## Backlog Per Square Foot

● Backlog/Sf ● Average Backlog (AB)/Sf



444

School Capacity

199

Enrollment

210

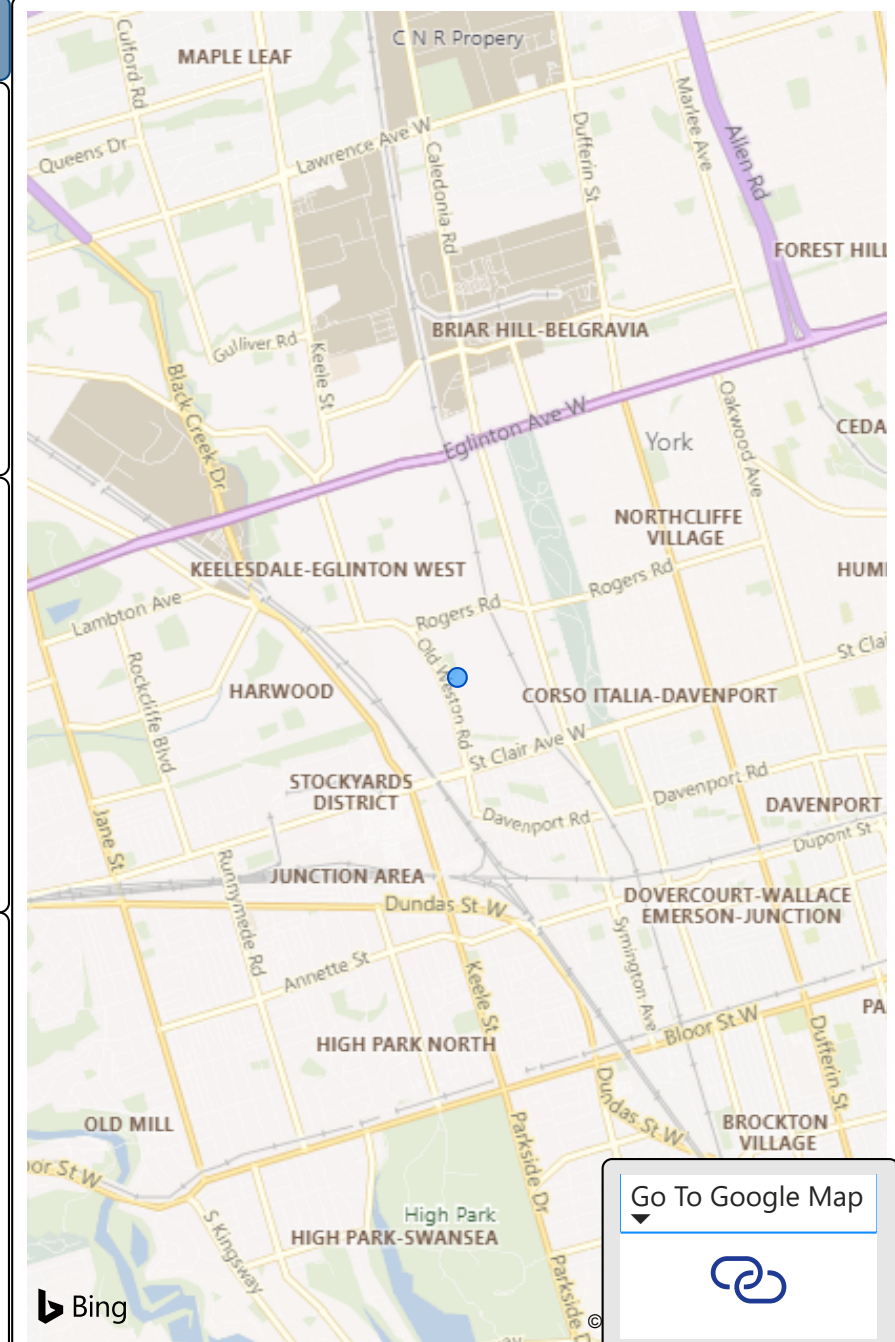
2025 Proj Enrollment

45%

2020 Utilization Rate

47%

2025 Utilization Rate



Go To Google Map



Bing