

# Givins/Shaw Junior Public School

Givins/Shaw Junior Public School



JK-6

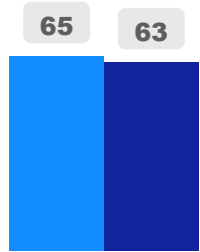
Elementary

Ward 9

Stephanie Donaldson

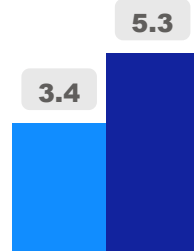
## Building Age

● Building Age ● Avg Building Age By Panel



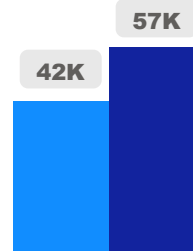
## Site Size

● Site Size (Ac) ● Avg Site Size By Panel

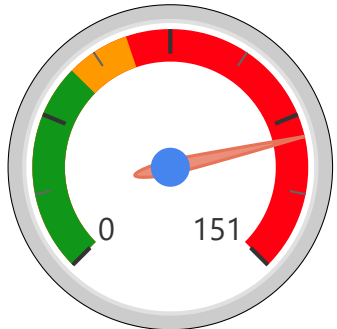


## Facility Size

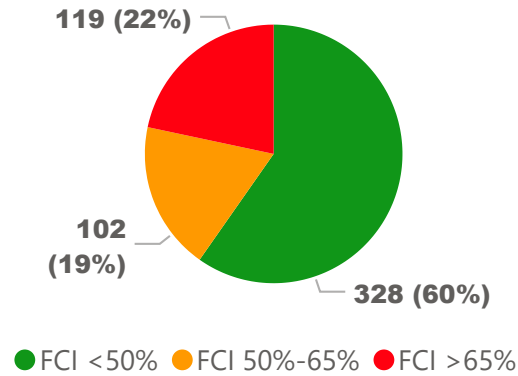
● Facility Size (Sf) ● Avg Facility Size By Panel



## Current FCI

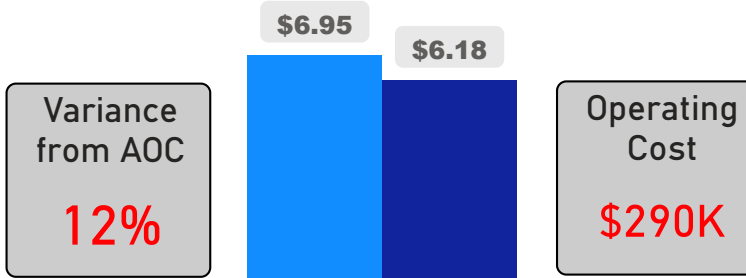


## System FCI



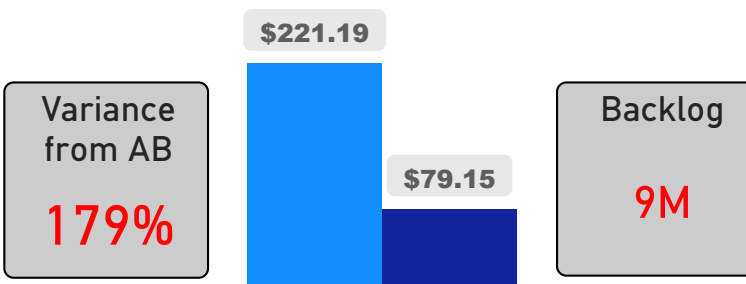
## Operating Cost Per Square Foot

● Operating Cost/Sf ● Average Operating Cost (AOC)/Sf



## Backlog Per Square Foot

● Backlog/Sf ● Average Backlog (AB)/Sf



349

School Capacity

258

Enrollment

285

2025 Proj Enrollment

74%

2020 Utilization Rate

82%

2025 Utilization Rate

