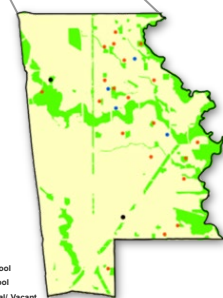
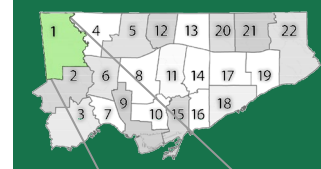
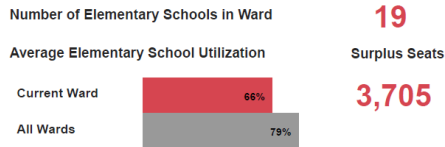


Ward 1 Highlights (City Ward 1 - Etobicoke North)

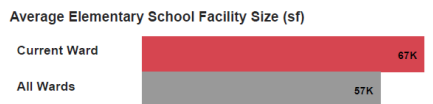
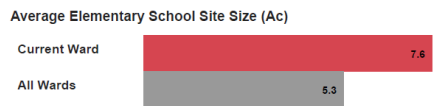


Total Ward Size: 11,948 acres
Total Ward Green Space: 2,529 acres
(21.2% of Total Ward Size)
86.7 m² per capita

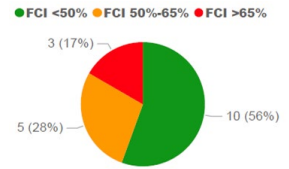
TDSB School Portfolio Index



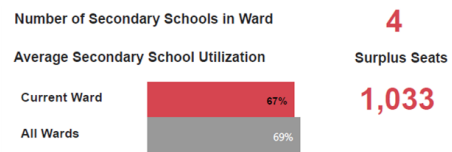
Elementary School Deferred Maintenance **\$90M**



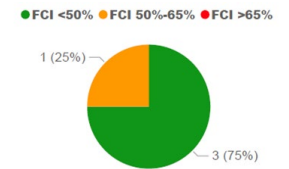
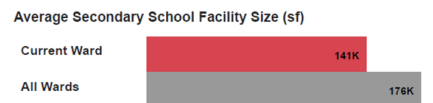
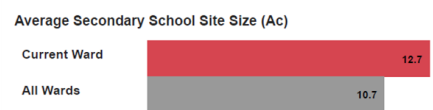
FCI: Facility Condition Index
Utilization Rate: # of Students/School Capacity
Ac: Acres
Sf: Square Feet



Elementary
Secondary



Secondary School Deferred Maintenance **\$53M**

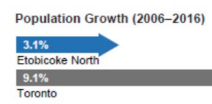


Population

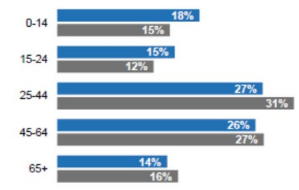
Ward Population **118,040**

Population Growth (2011-2016) **0.4%**

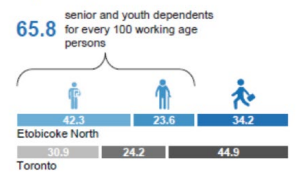
Median Age **36.5**



Population by Age Group



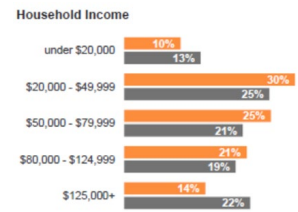
Dependency Ratio



Socioeconomic

Average Rent **\$1,064**

% of Tenant Households spending >30% of income on shelter costs **42.8%**

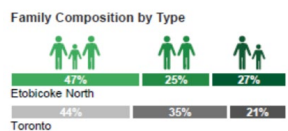
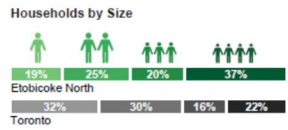


Average Household Income

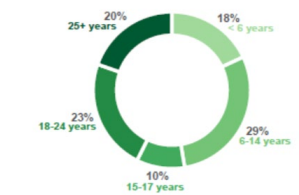
\$73,374
Etobicoke North
\$102,721
Toronto

Households & Family

Average Number of People per Household **3.09**



Children Living at Home



Languages by Mother Tongue

