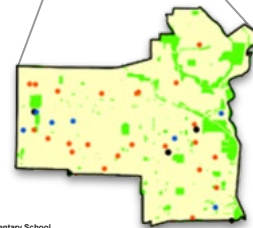
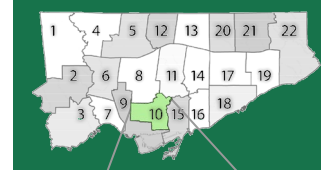


Ward 10 Highlights (City Ward 11 & 13 - University-Rosedale & Toronto Centre)



- Elementary School
- Secondary School
- Non-instructional/ Vacant

Total Ward Size: 4,808 acres
Total Ward Green Space: 1,040 acres
 (21.6% of Total Ward Size)
20.2 m² per capita

TDSB School Portfolio Index

Number of Elementary Schools in Ward **24**

Average Elementary School Utilization **Surplus Seats**

Current Ward **72%** **2,743**

All Wards **79%**

Elementary School Deferred Maintenance **\$113M**

Average Elementary School Site Size (Ac)

Current Ward **2.9**

All Wards **5.3**

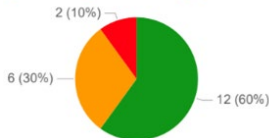
Average Elementary School Facility Size (sf)

Current Ward **70K**

All Wards **57K**

FCI: Facility Condition Index
Utilization Rate: # of Students/School Capacity
Ac: Acres
Sf: Square Feet

● FCI <50% ● FCI 50%-65% ● FCI >65%



Elementary
Secondary

Number of Secondary Schools in Ward **10**

Average Secondary School Utilization **Surplus Seats**

Current Ward **66%** **1,954**

All Wards **69%**

Secondary School Deferred Maintenance **\$166M**

Average Secondary School Site Size (Ac)

Current Ward **6.3**

All Wards **10.7**

Average Secondary School Facility Size (sf)

Current Ward **203K**

All Wards **176K**

● FCI <50% ● FCI 50%-65% ● FCI >65%



Population

Ward Population **208,115**

Population Growth (2011-2016) **8.2%**

Median Age **35.5**

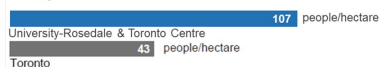
Population Growth (2011-2016)



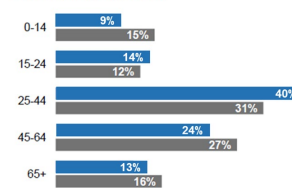
Population Growth (2006-2016)



Density

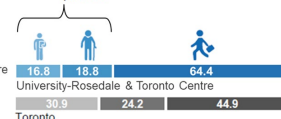


Population by Age Group



Dependency Ratio

35.6 senior and youth dependents for every 100 working age persons

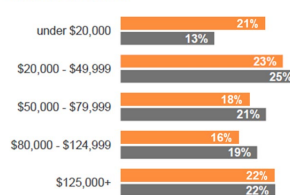


Socioeconomic

Average Rent **\$1,387**

% of Tenant Households spending >30% of income on shelter costs **49.4%**

Household Income



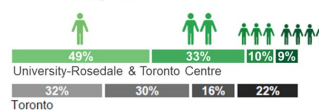
Average Household Income



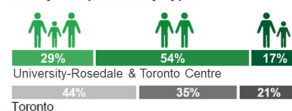
Households & Family

Average Number of People per Household **1.83**

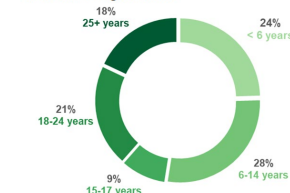
Households by Size



Family Composition by Type



Children Living at Home



Languages by Mother Tongue

