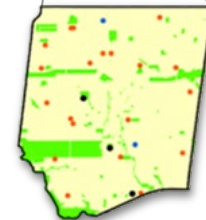
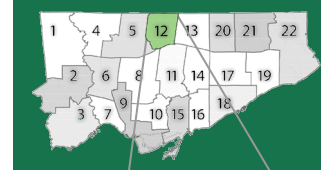


# Ward 12 Highlights (City Ward 18 - Willowdale)



- Elementary School
- Secondary School
- Non-instructional/ Vacant

**Total Ward Size: 4,883 acres**  
**Total Ward Green Space: 1,170 acres**  
(24.0% of Total Ward Size)  
**39.9 m<sup>2</sup> per capita**

## TDSB School Portfolio Index

Number of Elementary Schools in Ward **15**

Average Elementary School Utilization **Surplus Seats**

Current Ward **82%** **1,306**

All Wards **79%**

Elementary School Deferred Maintenance **\$46M**

Average Elementary School Site Size (Ac)

Current Ward **5.9**

All Wards **5.3**

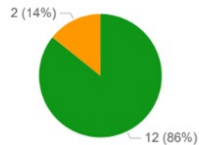
Average Elementary School Facility Size (sf)

Current Ward **59K**

All Wards **57K**

**FCI:** Facility Condition Index  
**Utilization Rate:** # of Students/School Capacity  
**Ac:** Acres  
**Sf:** Square Feet

● FCI <50% ● FCI 50%-65% ● FCI >65%



**Elementary**  
**Secondary**

Number of Secondary Schools in Ward **5**

Average Secondary School Utilization **Surplus Seats**

Current Ward **40%** **1,232**

All Wards **69%**

Secondary School Deferred Maintenance **\$31M**

Average Secondary School Site Size (Ac)

Current Ward **8.1**

All Wards **10.7**

Average Secondary School Facility Size (sf)

Current Ward **136K**

All Wards **176K**

● FCI <50% ● FCI 50%-65% ● FCI >65%



## Population

Ward Population **118,800**

Population Growth (2011-2016) **8.3%**

Median Age **38.5**

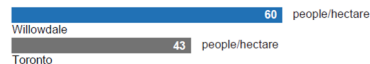
Population Growth (2011-2016)



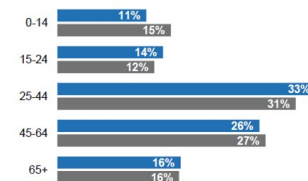
Population Growth (2006-2016)



Density

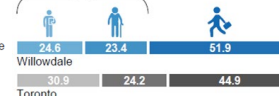


Population by Age Group



Dependency Ratio

**48.1** senior and youth dependents for every 100 working age persons

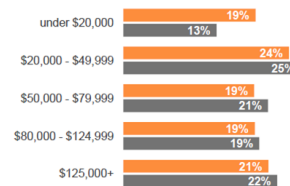


## Socioeconomic

Average Rent **\$1,537**

% of Tenant Households spending >30% of income on shelter costs **59.4%**

Household Income



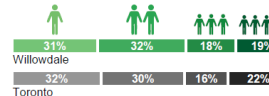
Average Household Income



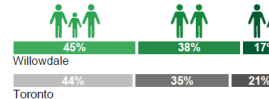
## Households & Family

Average Number of People per Household **2.35**

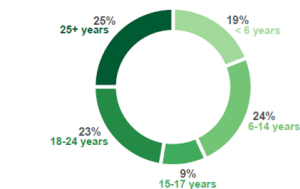
Households by Size



Family Composition by Type



Children Living at Home



Languages by Mother Tongue

