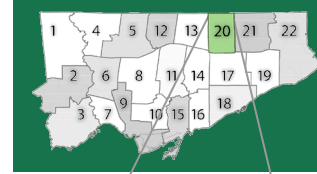


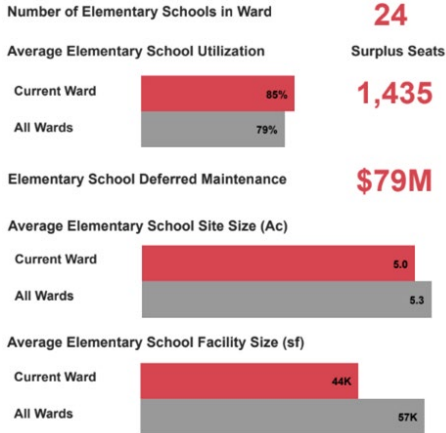
Ward 20 Highlights (City Ward 22 - Scarborough-Agincourt)



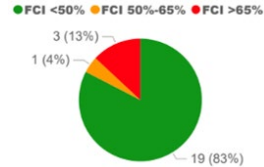
- Elementary School
- Secondary School
- Non-Instructional/ Vacant

Total Ward Size: 5,287 acres
Total Ward Green Space: 708 acres
(13.4% of Total Ward Size)
27.2 m² per capita

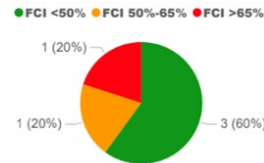
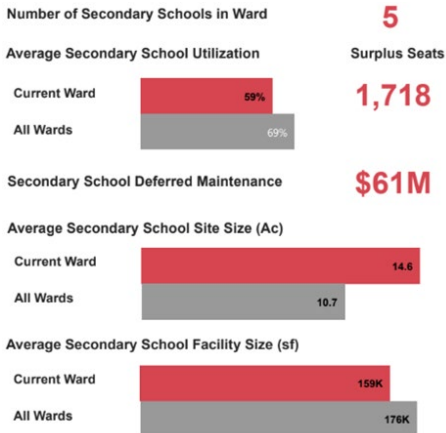
TDSB School Portfolio Index



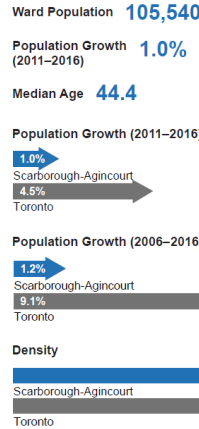
FCI: Facility Condition Index
Utilization Rate: # of Students/School Capacity
Ac: Acres
Sf: Square Feet



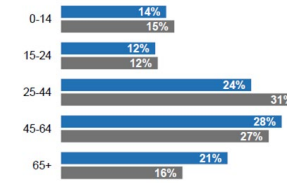
Elementary
Secondary



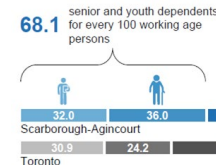
Population



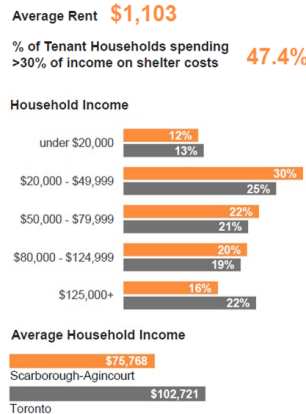
Population by Age Group



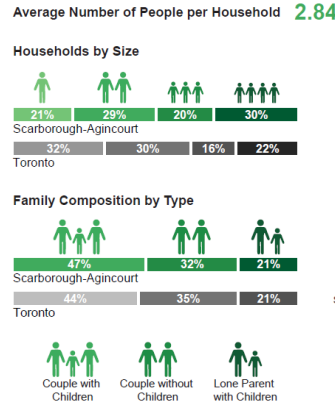
Dependency Ratio



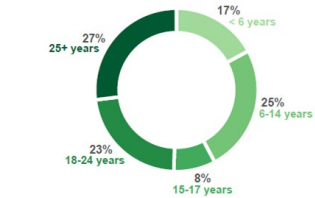
Socioeconomic



Households & Family



Children Living at Home



Languages by Mother Tongue

